

APP CRS 334°	Rwy Idg TDZE Apt Elev	N/A N/A 150
------------------------	-----------------------------	--

RNAV (GPS)-B
ORLANDO APOPKA (X04)

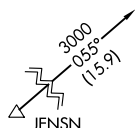
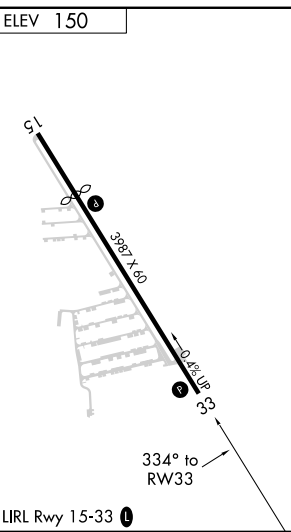
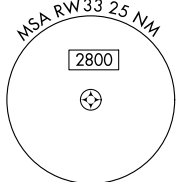
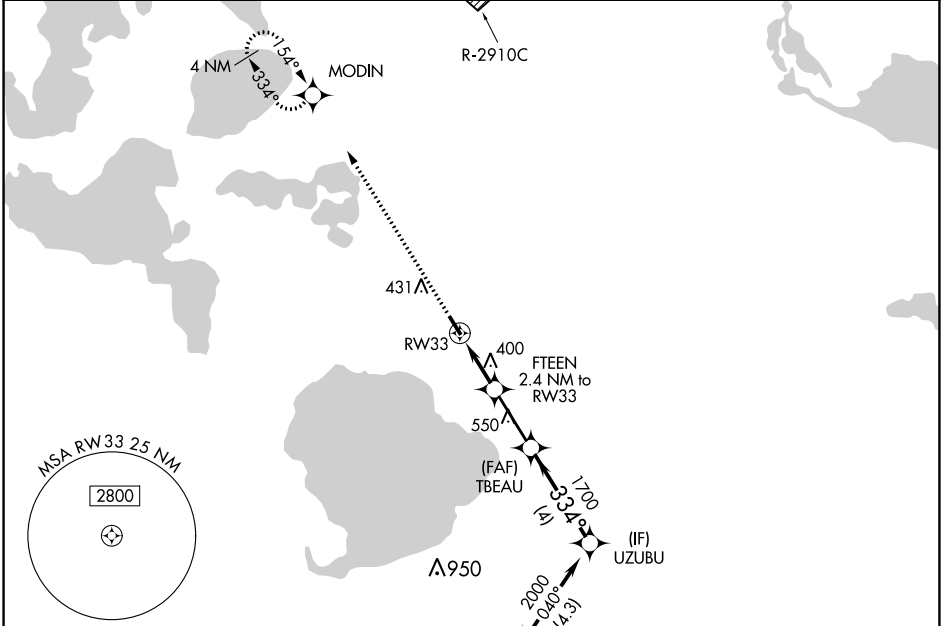
NA DME/DME RNP-0.3 NA. Procedure NA at night. Visibility reduction by helicopters NA. Use Leesburg Intl altimeter setting; when not received, use Executive altimeter setting.

MISSED APPROACH: Climb to 2000 direct MODIN and hold.

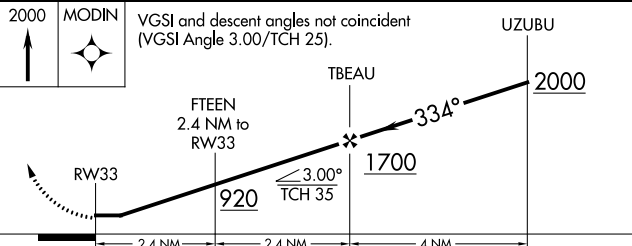
LEE ASOS
134.325

ORLANDO APP CON
135.3 351.9

UNICOM
123.05 (CTAF)



Procedure NA for arrivals at JENSN on V152 southwest bound.



CATEGORY	A	B	C	D
CIRCLING	700-1 550 (600-1)	840-1 690 (700-1)	NA	

SE-3, 26 DEC 2024 to 23 JAN 2025

SE-3, 26 DEC 2024 to 23 JAN 2025