

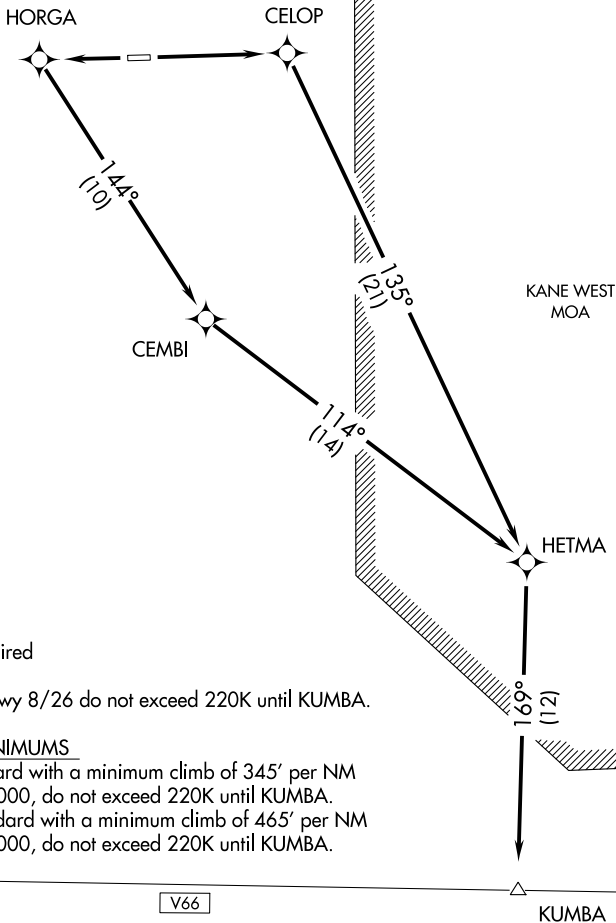
(KUMBA1.KUMBA) 18256

KUMBA ONE DEPARTURE (RNAV)

AL-9287 (FAA)

BORREGO VALLEY (L08)
BORREGO SPRINGS, CALIFORNIA

LOS ANGELES CENTER
128.6 291.7
CTAF 122.8
AWOS-3P 126.575



NOTE: GPS required
NOTE: RNAV 1
NOTE: Takeoff Rwy 8/26 do not exceed 220K until KUMBA.

TAKEOFF MINIMUMS

Rwy 8: Standard with a minimum climb of 345' per NM to 5000, do not exceed 220K until KUMBA.
Rwy 26: Standard with a minimum climb of 465' per NM to 5000, do not exceed 220K until KUMBA.

NOTE: Chart not to scale.

DEPARTURE ROUTE DESCRIPTION

TAKEOFF RUNWAY 8: Climb direct CELOP then via depicted route to KUMBA.

TAKEOFF RUNWAY 26: Climb direct HORG, and left turn 144° track to CEMBI, then via depicted route to KUMBA.

KUMBA ONE DEPARTURE (RNAV)

(KUMBA1.KUMBA) 10APR08

BORREGO SPRINGS, CALIFORNIA
BORREGO VALLEY (L08)

SW-3, 26 DEC 2024 to 23 JAN 2025

SW-3, 26 DEC 2024 to 23 JAN 2025