

| | | |
|-------------|----------|-------------|
| APP CRS | Rwy Idg | 3300 |
| 032° | TDZE | 30 |
| | Apt Elev | 30 |

RNAV (GPS) RWY 2

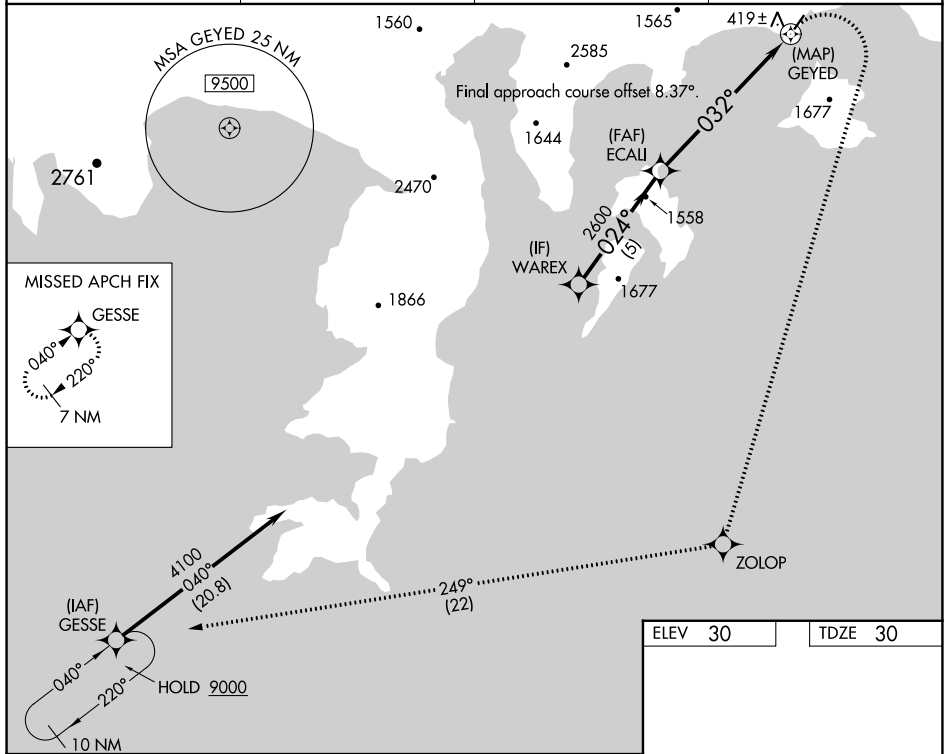
PERRYVILLE (PEV) (PAPF)

RNP APCH - GPS.

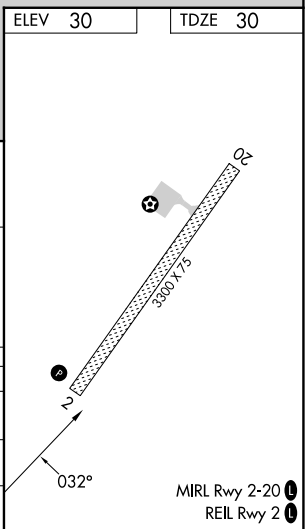
▼ Rwy 2 helicopter visibility reduction below 1 SM NA.
 ▲ NA Procedure NA at night. When local altimeter setting not received, use Chignik altimeter setting.

MISSED APPROACH: (Do not exceed 230K until completion of climbing right turn) Climbing right turn to 9000 direct ZOLOP and on track 249° to GESSE, continue climb-in-hold to 9000.
 *Misted approach requires minimum climb of 418' per NM to 2400.

| | | | |
|-------------------------|-----------------------------------|---|-----------------------|
| AWOS-3P 118.1 | AJC/PAJC AWOS-3P 135.75 | ANCHORAGE CENTER 125.35 346.3 | CTAF 122.90 |
|-------------------------|-----------------------------------|---|-----------------------|



| | | | | |
|-----------|---------------------------|---------------------------|-------------------------|---------------|
| | WAREX | ECAU | GEYED | GESSE |
| | 4100 | 2600 | 3.43° TCH 28 | tr 249° |
| | 5 NM | | 6.8 NM | |
| CATEGORY | A | B | C | D |
| LNAV MDA* | 1360-1¼ 1330 (1400-1¼) | 1360-1½ 1330 (1400-1½) | 1360-3 | 1330 (1400-3) |
| LNAV MDA | 2080-1¼ 2050 (2100-1¼) | 2080-1½ 2050 (2100-1½) | 2080-3 | 2050 (2100-3) |
| CIRCLING | 2080-1¼ 2050 (2100-1¼) | 2080-1½ 2050 (2100-1½) | 2160-3 2130 (2200-3) | NA |



AK, 26 DEC 2024 to 20 FEB 2025

AK, 26 DEC 2024 to 20 FEB 2025