

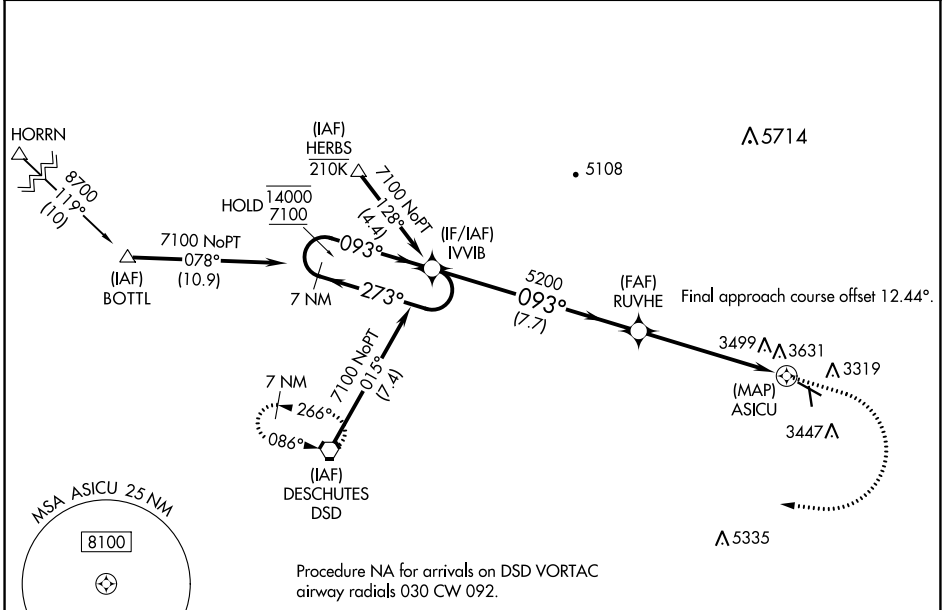
WAAS CH 60936 W11A	APP CRS 093°	Rwy Idg TDZE Apt Elev	5405 3246 3251
--	------------------------	-----------------------------	---

RNAV (GPS) RWY 11

PRINEVILLE (S39)

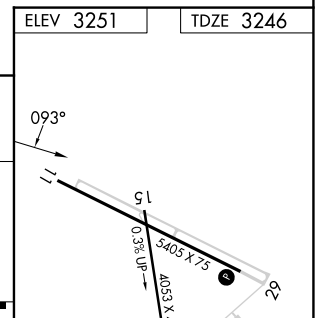
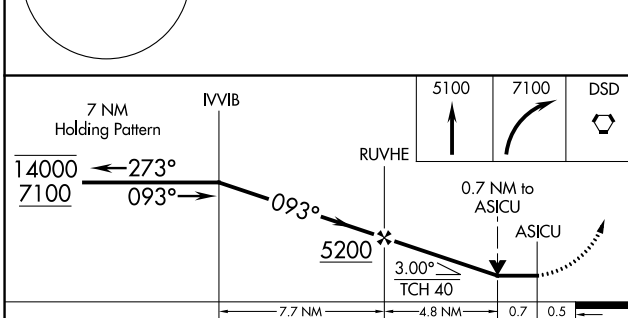
RNP APCH-GPS.	MISSED APPROACH: Climb to 5100 then climbing right turn to 7100 direct DSD VORTAC and hold.
<p>⚠ Circling NA for Cat D south of Rwy 11-29.</p> <p>⚠ Rwy 11 helicopter visibility reduction below 3/4 SM NA.</p> <p>⚠ Circling Rwy 15 NA at night.</p>	*Misted approach requires minimum climb of 215 feet per NM to 5400.

AWOS-3PT 118.325	SEATTLE CENTER 126.15 269.475	UNICOM 122.7 (CTAF) 0
----------------------------	---	---------------------------------



NW-1, 26 DEC 2024 to 23 JAN 2025

NW-1, 26 DEC 2024 to 23 JAN 2025



CATEGORY	A	B	C	D
LP MDA*	3660-1 414 (500-1)		3660-1 1/8 414 (500-1 1/8)	
LP MDA	3760-1 514 (600-1)		3760-1 3/8 514 (600-1 3/8)	
LNAV MDA	3900-1 654 (700-1)		3900-1 7/8 654 (700-1 7/8)	
CIRCLING	3960-1 709 (800-1)	4040-1 789 (800-1)	4040-2 1/4 789 (800-2 1/4)	4040-2 1/2 789 (800-2 1/2)

ELEV 3251	TDZE 3246
MIRL Rwy 11-29 0	LIRL Rwy 15-33 0