

WAAS CH <b>78430</b> <b>W07A</b>	APP CRS <b>066°</b>	Rwy Idg TDZE Apt Elev	<b>5003</b> <b>1393</b> <b>1411</b>
--	------------------------	-----------------------------	---

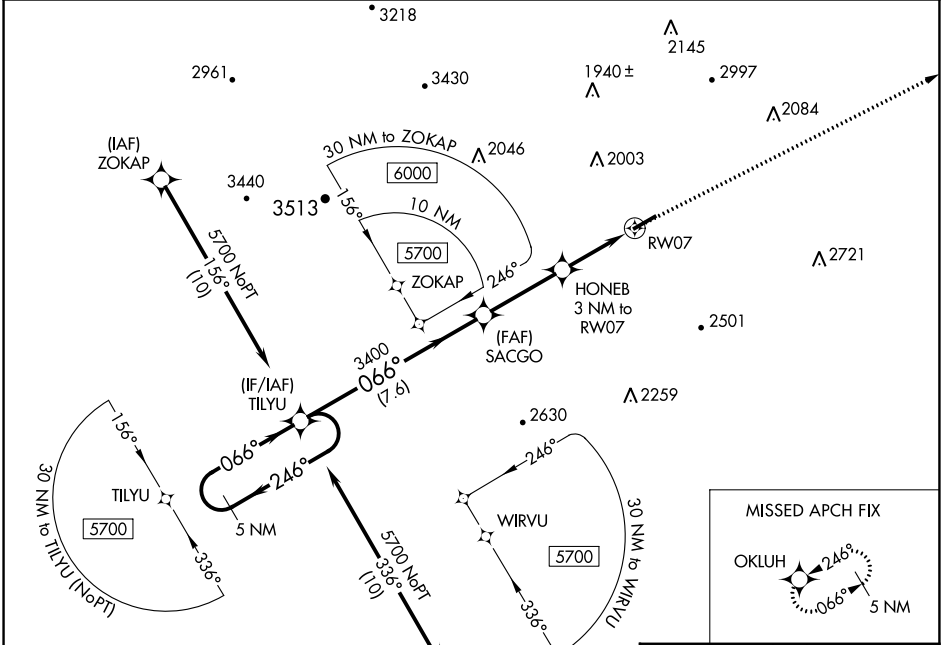
# RNAV (GPS) RWY 7

LEE COUNTY (ØVG)

▼ DME/DME RNP-0.3 NA. Rwy 07 helicopter visibility reduction below ¾ SM NA.  
 ▲ \*\* Missed approach requires minimum climb gradient of 240 feet per NM to 3400.

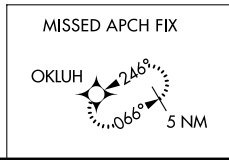
MISSED APPROACH: Climb to 5600 direct OKLUH and hold, continue climb-in-hold to 5600.

AWOS-3 <b>120.125</b>	ATLANTA CENTER <b>127.55 269.50</b>	CTAF <b>122.9</b>
--------------------------	--	----------------------

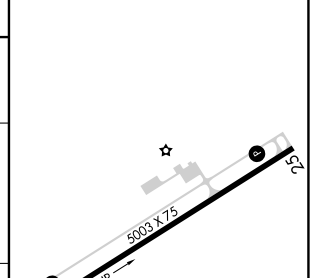
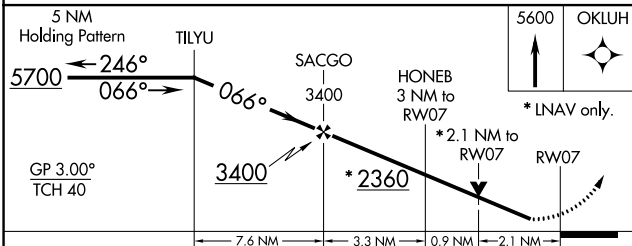


NE-3, 26 DEC 2024 to 23 JAN 2025

NE-3, 26 DEC 2024 to 23 JAN 2025



ELEV	1411	TDZE	1393
------	------	------	------



CATEGORY	A	B	C	D
LPV DA	**1643-1	250 (300-1)		NA
LPV DA	1881-1¾	488 (500-1¾)		NA
LNAV/VNAV DA	2024-2½	631 (700-2½)		NA
LNAV MDA	2080-1	687 (700-1)	2080-1¾ 687 (700-1¾)	NA
Ⓢ CIRCLING	2140-1 729 (800-1)	2180-1 769 (800-1)	2600-3 1189 (1200-3)	NA

MIRL Rwy 7-25  
 REIL Rwy 7 and 25