

WAAS CH <b>77718</b> <b>W30A</b>	APP CRS <b>298°</b>	Rwy Idg TDZE Apt Elev	<b>4409</b> <b>1192</b> <b>1194</b>
--	------------------------	-----------------------------	---

# RNAV (GPS) RWY 30

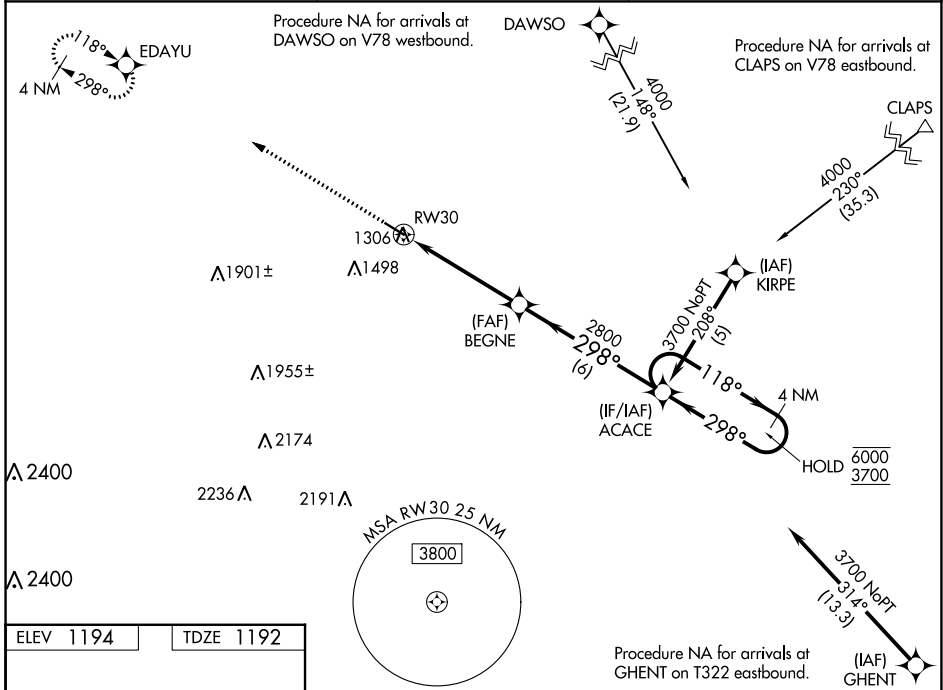
MYERS FLD (CNB)

RNP APCH - GPS.

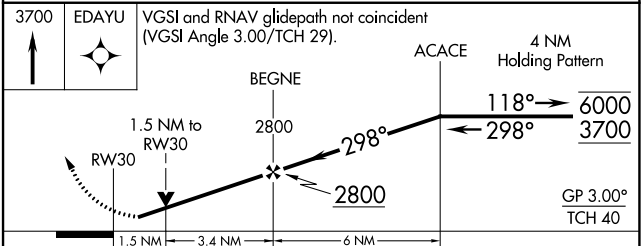
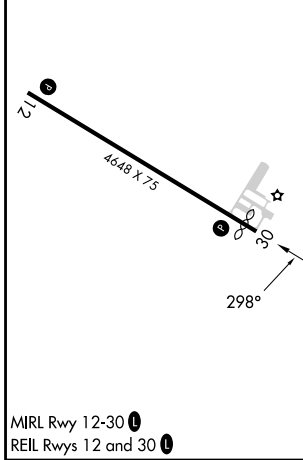
**⚠** Rwy 30 helicopter visibility reduction below 3/4 SM NA.  
**⚠** For uncompensated Baro-VNAV systems, LNAV/VNAV NA below -17°C or above 54°C.

MISSED APPROACH: Climb to 3700 direct EDAYU and hold.

AWOS-3 <b>118.575</b>	MINNEAPOLIS CENTER <b>128.5 306.2</b>	CTAF <b>122.9</b>
--------------------------	--	----------------------



ELEV 1194	TDZE 1192
-----------	-----------



CATEGORY	A	B	C	D
LPV DA	1442-1		250 (300-1)	
LNAV/VNAV DA	1573-1½		381 (400-1½)	
LNAV MDA	1680-1	488 (500-1)	1680-1¾	488 (500-1¾)
<input checked="" type="checkbox"/> CIRCLING	1700-1	506 (600-1)	1800-1¾ 606 (700-1¾)	1960-2½ 766 (800-2½)

NC-1, 26 DEC 2024 to 23 JAN 2025

NC-1, 26 DEC 2024 to 23 JAN 2025