

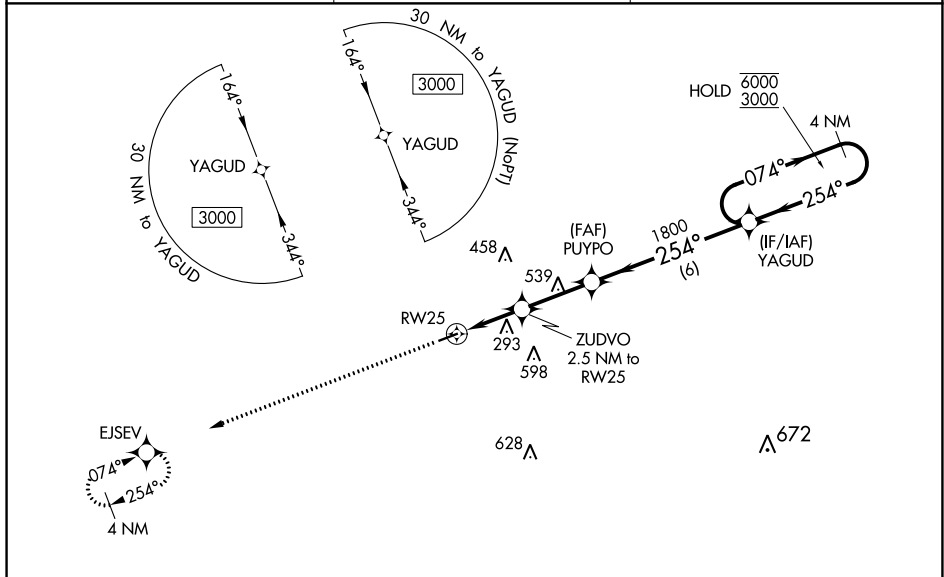
WAAS CH 58232 W25A	APP CRS 254°	Rwy Idg 4005 TDZE 103 Apt Elev 103
--	------------------------	---

RNAV (GPS) RWY 25

SUWANNEE COUNTY (24J)

RNP APCH.	<p>⚠ Procedure NA at night. Rwy 25 helicopter visibility reduction below 1 SM NA. For uncompensated Baro-VNAV systems, LNAV/VNAV NA below -15°C or above 54°C.</p>	<p>MISSED APPROACH: Climb to 3000 direct EJSEV and hold.</p>

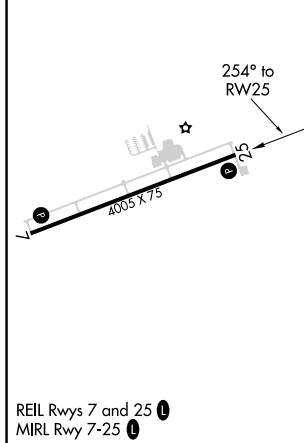
AWOS-3 118.225	JACKSONVILLE CENTER 125.375 254.325	UNICOM 122.8 (CTAF) ①
--------------------------	---	---------------------------------



SE-3, 26 DEC 2024 to 23 JAN 2025

SE-3, 26 DEC 2024 to 23 JAN 2025

ELEV 103	TDZE 103
----------	----------



3000	EJSEV	4 NM Holding Pattern		
*LNAV only.				
ZUDVO 2.5 NM to RW25	PUYPO 1800	YAGUD		
RW25	1800	074° → 6000 ← 254° 3000		
2.5 NM	2.7 NM	6 NM		
940*	1800	GP 3.00° TCH 52		
CATEGORY	A	B	C	D
LPV DA	353-1	250 (300-1)		NA
LNAV/VNAV DA	536-1½	433 (500-1½)		NA
LNAV MDA	560-1	457 (500-1)		NA
C CIRCLING	560-1 457 (500-1)	600-1 497 (500-1)		NA

LIVE OAK, FLORIDA
Orig-C 21MAY20

30°18'N-83°01'W

RNAV (GPS) RWY 25

SUWANNEE COUNTY (24J)