

WAAS CH <b>56540</b> <b>W28A</b>	APP CRS <b>283°</b>	Rwy Idg TDZE <b>4230</b> Apt Elev <b>4230</b>	<b>6000</b> <b>4230</b> <b>4230</b>
--	------------------------	---	---

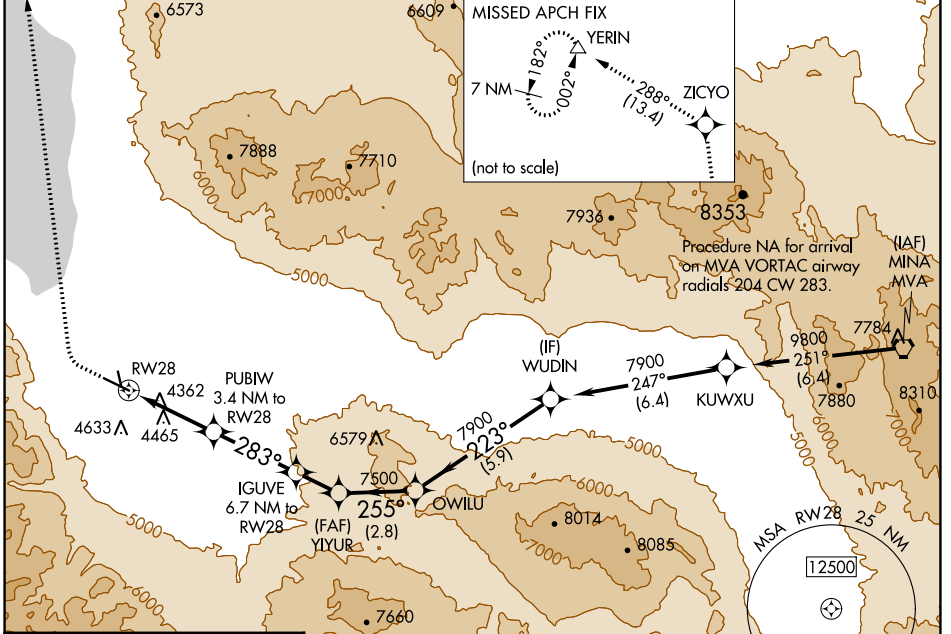
# RNAV (GPS) RWY 28

HAWTHORNE INDUSTRIAL (HTH)

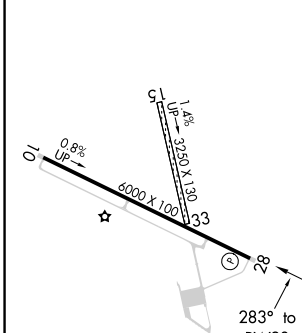
**⚠** Circling NA to Rwys 15 and 33. When local altimeter setting not received, procedure NA. Circling NA south of Rwy 10-28. DME/DME RNP-0.3 NA. Rwy 28 helicopter visibility reduction below ¾ SM NA.

**⚠** MISSED APPROACH: Climb to 4750 then climbing right turn to 10000 direct ZICYO and on track 288° to YERIN and hold.

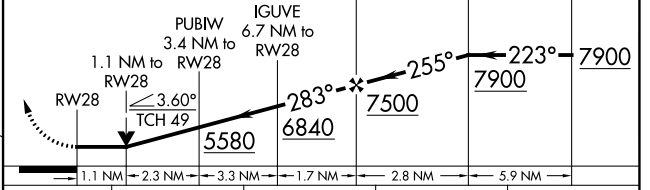
AWOS-3 <b>120.225</b>	OAKLAND CENTER <b>125.75 284.65</b>	UNICOM <b>122.8 (CTAF) 0</b>
--------------------------	--	---------------------------------



ELEV 4230	TDZE 4230
-----------	-----------



4750	10000	ZICYO	tr 288°	YERIN	VGSI and descent angles not coincident (VGSI Angle 3.00/TCH 49).
------	-------	-------	---------	-------	--



CATEGORY	A		B		C		D
	LP MDA	4620-1	390 (400-1)	4620-1 1/8	390 (400-1 1/8)	4720-1 3/8	490 (500-1 3/8)
LNAV MDA	4720-1	490 (500-1)	4720-1 3/8	490 (500-1 3/8)	5680-3	1450 (1500-3)	NA
<b>C</b> CIRCLING	4720-1	490 (500-1)	5680-3	1450 (1500-3)			NA

REIL Rwys 10 and 28 **0**  
MIRL Rwys 10-28 **0**

SW-4, 26 DEC 2024 to 23 JAN 2025

SW-4, 26 DEC 2024 to 23 JAN 2025