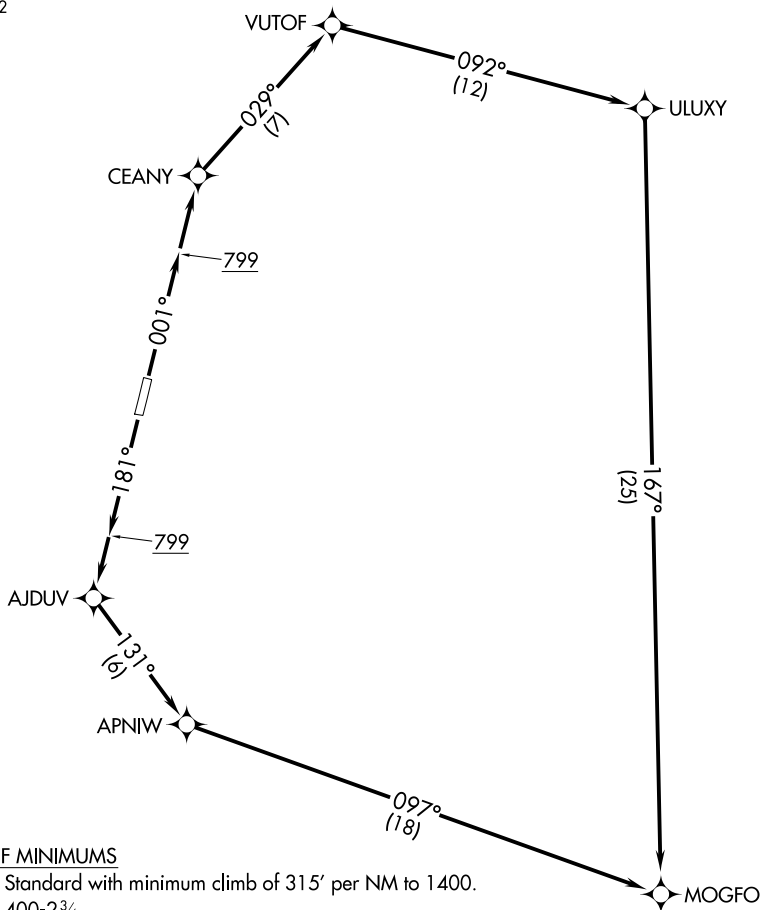


# HUGHES ONE DEPARTURE (OBSTACLE) (RNAV)

ANCHORAGE CENTER  
124.6 352



### TAKEOFF MINIMUMS

Rwy 18: Standard with minimum climb of 315' per NM to 1400.

Rwy 36: 400-2¾.

NOTE: RNAV 1.

NOTE: GPS required.

NOTE: Procedure NA at night.

NOTE: Chart not to scale.

(NOTES CONTINUED ON FOLLOWING PAGE)

### DEPARTURE ROUTE DESCRIPTION

TAKEOFF RUNWAY 18: Climb on heading 181° to 799, then direct AJDUV, then on track 131° to APNIW, then on track 097° to MOGFO, cross MOGFO at or above MEA/MCA for assigned route of flight.

TAKEOFF RUNWAY 36: Climb on heading 001° to 799, then direct CEANY, then on track 029° to VUTOF, then on track 092° to ULUXY, then on track 167° to MOGFO, cross MOGFO at or above MEA/MCA for assigned route of flight.