

WAAS CH 42714 W07A	APP CRS 068°	Rwy Idg TDZE Apt Elev	4000 149 149
--	------------------------	-----------------------------	---

RNAV (GPS) RWY 7

KOYUKUK (KYU) (PFKU)

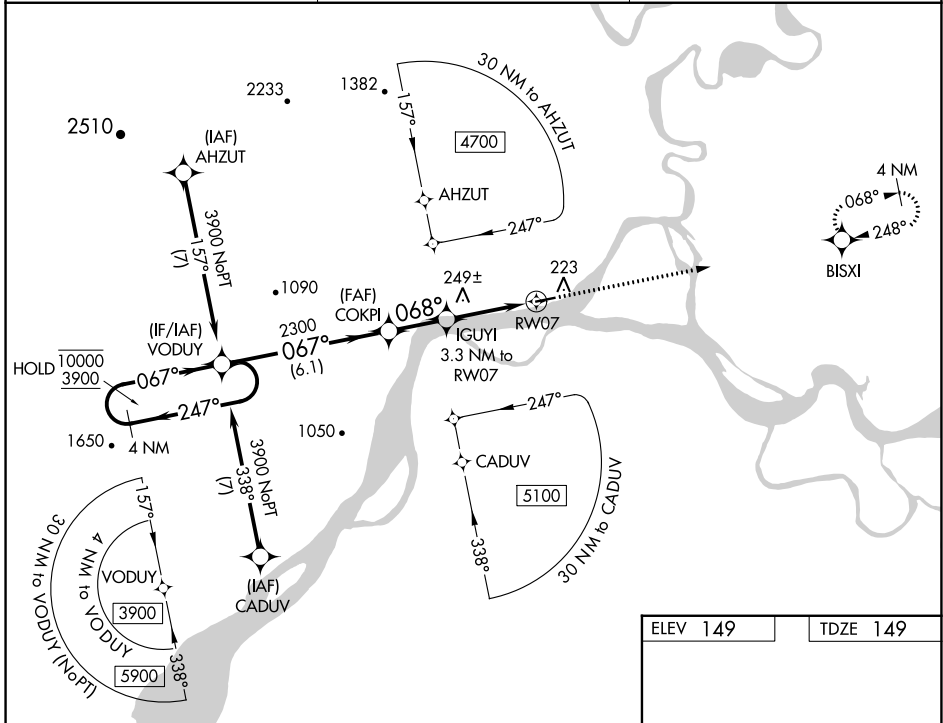
RNP APCH-GPS.

⚠ Circling Rwy 25 NA at night. Rwy 7 helicopter visibility reduction below $\frac{3}{4}$ SM NA. Use Galena altimeter setting; when not received, procedure NA.

⚠ NA MISSED APPROACH: Climb to 3700 direct BISXI and hold, continue climb-in-hold to 3700.

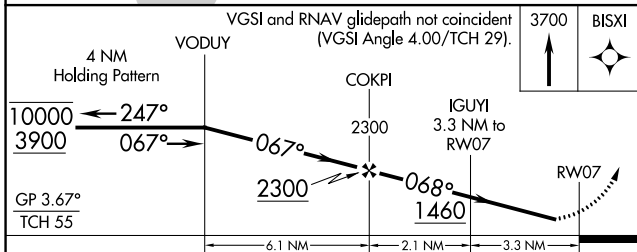
❄ -48°C

GAL/PAGA AWOS-3P 132.525	ANCHORAGE CENTER 127.0 290.2	CTAF 122.9 0
------------------------------------	--	------------------------

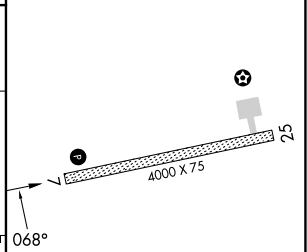


AK, 26 DEC 2024 to 20 FEB 2025

AK, 26 DEC 2024 to 20 FEB 2025



ELEV 149	TDZE 149
----------	----------



CATEGORY	A	B	C	D
LPV DA	520-1 371 (400-1)			NA
LNAV MDA	720-1 571 (600-1)	720-1 $\frac{5}{8}$ 571 (600-1 $\frac{5}{8}$)		NA
C CIRCLING	720-1 571 (600-1)	900-1 751 (800-1)	1320-3 1171 (1200-3)	NA

REIL Rwy 7 **0**
MIRL Rwy 7-25 **0**