

APP CRS	Rwy Idg	4001
230°	TDZE	448
	Apt Elev	448

RNAV (GPS) RWY 23

NIKOLAI (FSP)(PAFS)

RNP APCH.

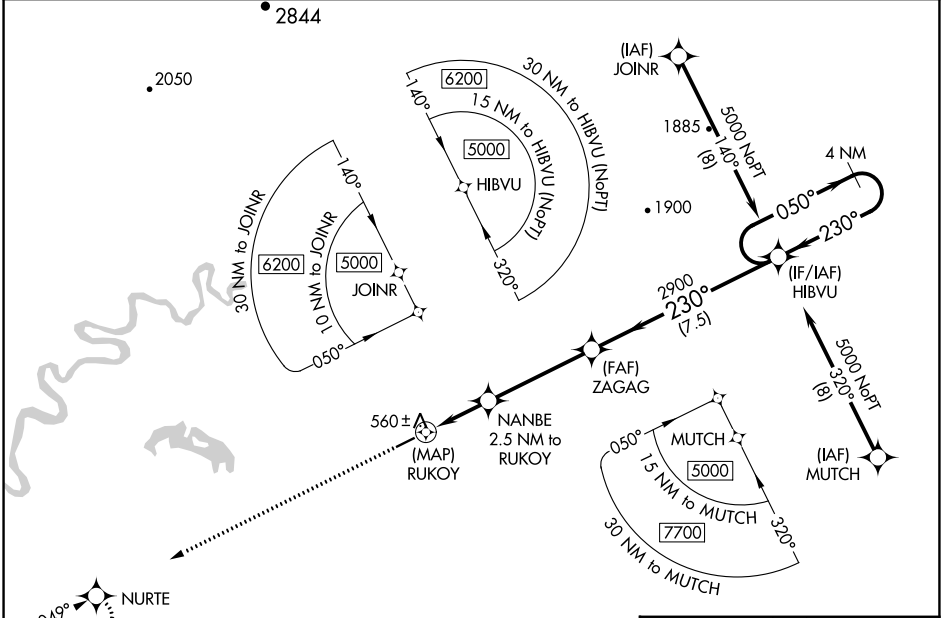
▽ Rwy 23 helicopter visibility reduction below 3/4 SM NA.

MISSED APPROACH: Climb to 3000 direct NURTE and hold.

AWOS-3P
118.325

ANCHORAGE CENTER
128.1 353.8

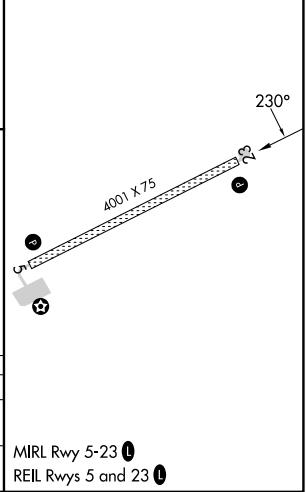
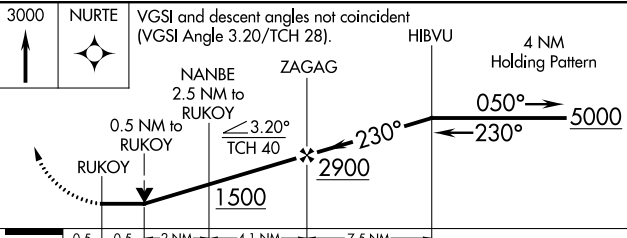
CTAF
122.8



AK, 26 DEC 2024 to 20 FEB 2025

AK, 26 DEC 2024 to 20 FEB 2025

ELEV 448	TDZE 448
----------	----------



CATEGORY	A	B	C	D
LNAV MDA	820-1 372 (400-1)			
CIRCLING	860-1	900-1	900-1½	1000-2
	412 (500-1)	452 (500-1)	452 (500-1½)	552 (600-2)