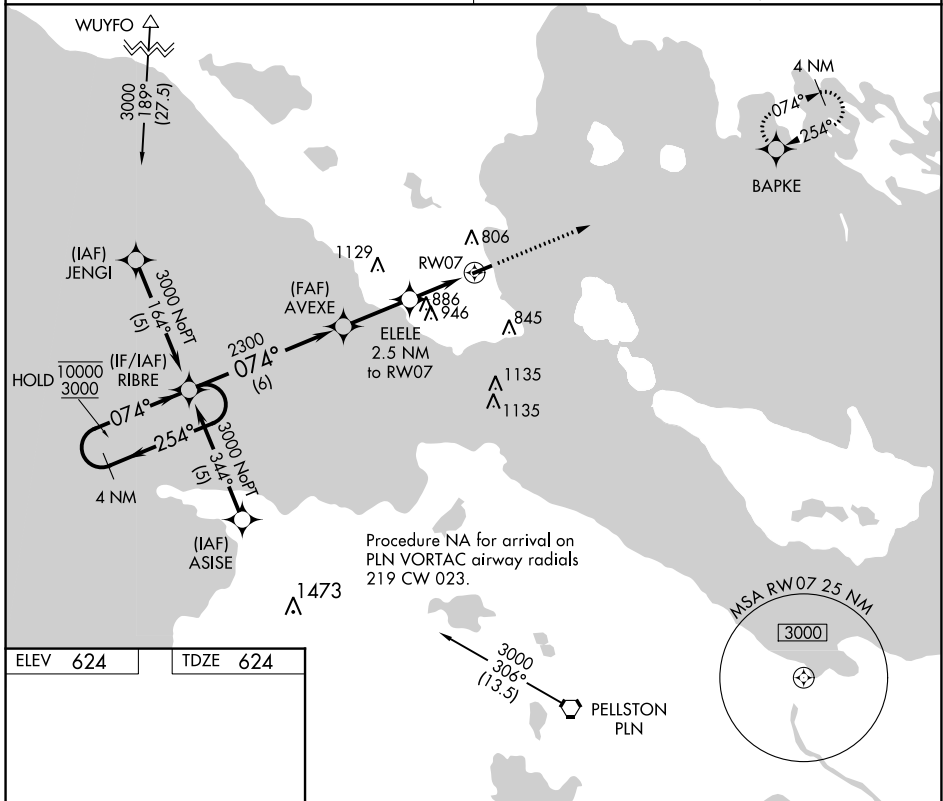


APP CRS	Rwy Idg	<b>3800</b>
<b>074°</b>	TDZE	<b>624</b>
	Apt Elev	<b>624</b>

# RNAV (GPS) RWY 7

MACKINAC COUNTY (83D)

RNP APCH.	Straight-in Rwy 07 NA at night, Circling Rwy 07 NA at night. Rwy 07 helicopter visibility reduction below 1 SM NA. Circling NA at night south of Rwy 07-25.	MISSED APPROACH: Climb to 3000 direct BAPKE and hold.
MINNEAPOLIS CENTER <b>134.6 354.05</b>		



ELEV	624	TDZE	624
------	-----	------	-----

MIRL Rwy 7-25  
 REIL Rws 7 and 25

4 NM Holding Pattern	RIBRE	Visual Segment - Obstacles.	3000	BAPKE
10000	← 254°	AVEXE	2300	↑
3000	→ 074°	ELELE	1460	✦
		2.5 NM to RW07		
		6 NM	2.6 NM	2.5 NM
CATEGORY	A	B	C	D
LNAV MDA	1200-1	576 (600-1)	1200-1½ 576 (600-1½)	NA
CIRCLING	1260-1	636 (700-1)	1300-2 676 (700-2)	NA

EC-1, 26 DEC 2024 to 23 JAN 2025

EC-1, 26 DEC 2024 to 23 JAN 2025