

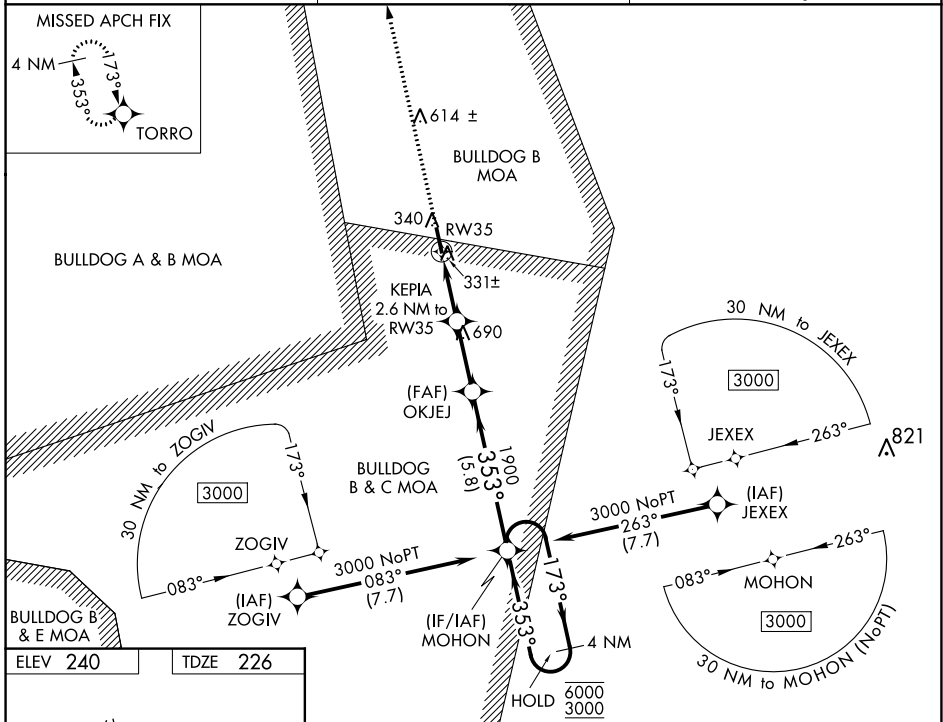
WAAS CH <b>53718</b> <b>W35A</b>	APP CRS <b>353°</b>	Rwy Idg TDZE <b>226</b> Apt Elev <b>240</b>	<b>5001</b>
--	------------------------	---	-------------

# RNAV (GPS) RWY 35

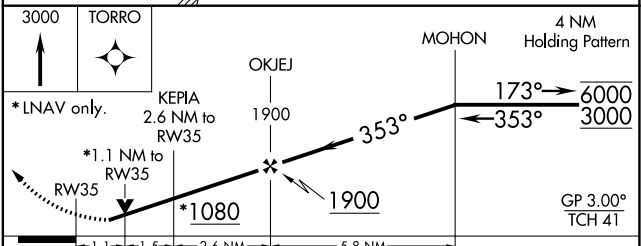
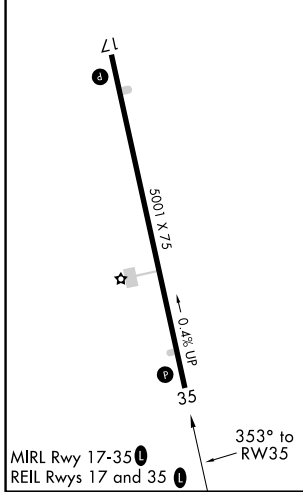
MILLEN (2J5)

RNP APCH.	<p><b>⚠</b> Circling NA east of Rwy 17-35. For uncompensated Baro-VNAV systems, LNAV/VNAV NA below -15°C or above 54°C. Rwy 35 helicopter visibility reduction below ¾ SM NA. Circling Rwy 17 NA at night.</p>	<p><b>MISSSED APPROACH:</b> Climb to 3000 direct TORRO and hold.</p>
-----------	--	--

AWOS-3PT <b>120.2</b>	AUGUSTA APP CON * <b>126.8 270.3</b>	CTAF <b>122.90</b>
--------------------------	---	-----------------------



ELEV <b>240</b>	TDZE <b>226</b>
-----------------	-----------------



CATEGORY	A	B	C	D
LPV DA		476-1	250 (300-1)	
LNAV/VNAV DA		633-1½	407 (400-1½)	
LNAV MDA		600-1	374 (400-1)	
<b>C</b> CIRCLING	680-1 440 (500-1)	700-1 460 (500-1)	700-1½ 460 (500-1½)	1040-2½ 800 (800-2½)

SE-4, 26 DEC 2024 to 23 JAN 2025

SE-4, 26 DEC 2024 to 23 JAN 2025