

| | | | |
|--|------------------------|-----------------------------|---|
| WAAS CH 42628 W07A | APP CRS 074° | Rwy Idg TDZE Apt Elev | 5000 1112 1122 |
|--|------------------------|-----------------------------|---|

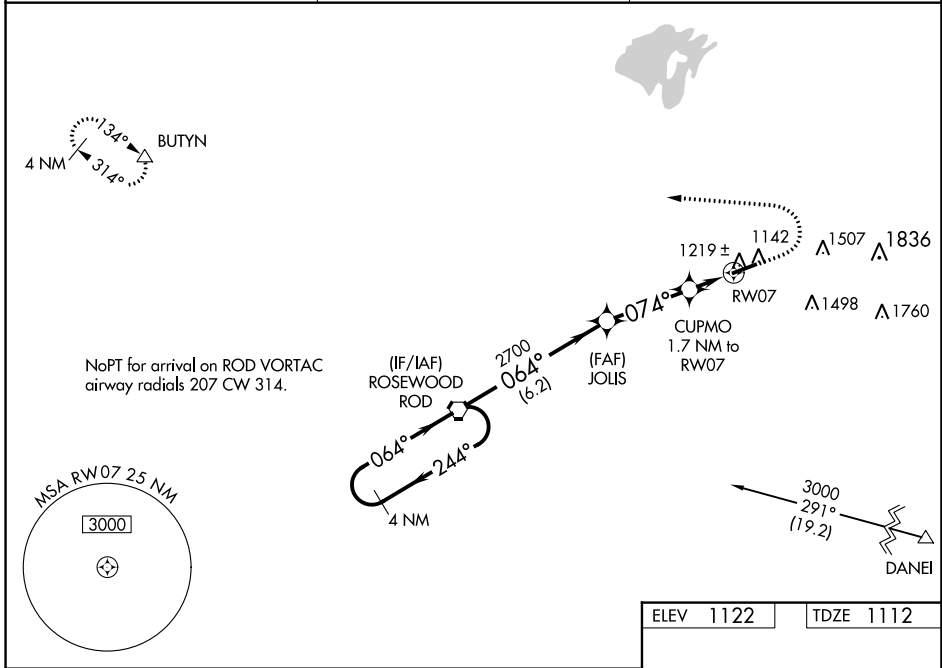
RNAV (GPS) RWY 7

BELLEFONTAINE RGNL (E.D.J)

NA For uncompensated Baro-VNAV systems, LNAV/VNAV NA below -17°C (2°F) or above 37°C (98°F). DME/DME RNP-0.3 NA. VDP and Baro-VNAV NA with James M. Cox Dayton Intl altimeter setting. When local altimeter setting not received, use James M. Cox Dayton Intl altimeter setting; increase LPV DA to 1456 feet, LNAV/VNAV DA to 1598 feet, and all MDAs 100 feet, and increase LPV and LNAV/VNAV all Cats visibility ¼ SM, LNAV Cats C and D visibility ⅜ SM, and Circling Cat C visibility ½ SM and Cat D visibility ¼ SM.

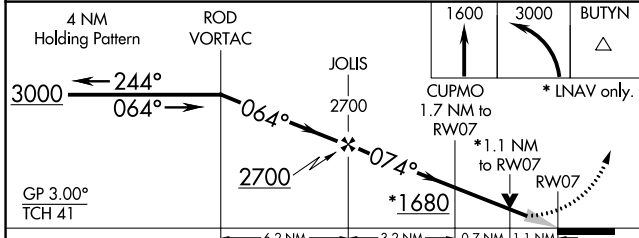
MISSED APPROACH:
Climb to 1600 then climbing left turn to 3000 direct BUTYN and hold.

| | | |
|--------------------------|---|---------------------------------|
| AWOS-3 118.075 | COLUMBUS APP CON 134.45 294.5 | UNICOM 122.8 (CTAF) 0 |
|--------------------------|---|---------------------------------|



EC-2, 26 DEC 2024 to 23 JAN 2025

EC-2, 26 DEC 2024 to 23 JAN 2025



| | |
|-----------|-----------|
| ELEV 1122 | TDZE 1112 |
|-----------|-----------|

| CATEGORY | A | B | C | D |
|--------------|-----------------------|-----------------------|-----------------------|-------------------------------|
| LPV DA | | 1362-7/8 | 250 (300-7/8) | |
| LNAV/VNAV DA | | 1504-13/8 | 392 (400-13/8) | |
| LNAV MDA | | 1480-1 | 368 (400-1) | |
| CIRCLING | 1620-1 498 (500-1) | 1640-1 518 (600-1) | 1860-2 738 (800-2) | 1980-2 3/4 858 (900-2 3/4) |

