

APP CRS 228°	Rwy Idg 4300
	TDZE 2864
	Apt Elev 2869

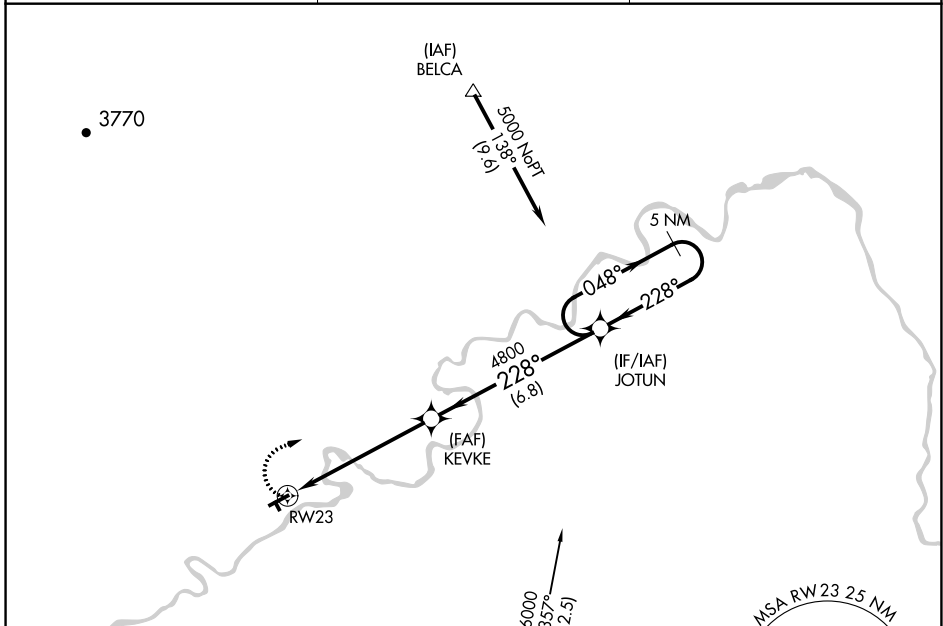
RNAV (GPS) RWY 23

FORT BENTON (79S)

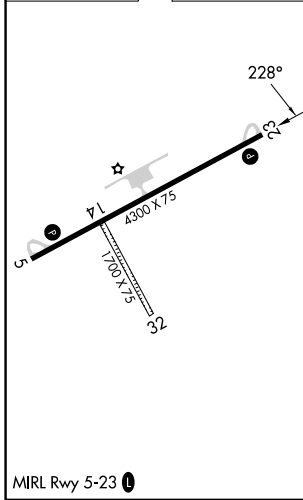
⚠ DME/DME RNP-0.3 NA. Procedure NA at night. When local altimeter setting not received, use Great Falls altimeter setting and increase all MDAs 200 feet and LNAV visibility Cat C ½ SM, and Circling visibility Cat C ¾ SM. Circling NA to Rwys 14-32.

MISSED APPROACH: Climbing right turn to 5000 direct JOTUN and hold.

AWOS-3PT 121.125	SALT LAKE CENTER 133.4 285.4	UNICOM 122.8 (CTAF)
----------------------------	--	-------------------------------



ELEV 2869	TDZE 2864
-----------	-----------



	5000 JOTUN		JOTUN 5 NM Holding Pattern	
	1.4 NM to RWY 23		KEVKE	
	3.05° TCH 40		4800	
	1.4	4.5 NM	6.8 NM	
CATEGORY	A	B	C	D
LNAV MDA	3340-1	476 (500-1)	3340-1¼ 476 (500-1¼)	NA
CIRCLING	3340-1	471 (500-1)	3460-1½ 591 (600-1½)	NA

NW-1, 26 DEC 2024 to 23 JAN 2025

NW-1, 26 DEC 2024 to 23 JAN 2025