

(MELLZ2.MELLZ) 22139

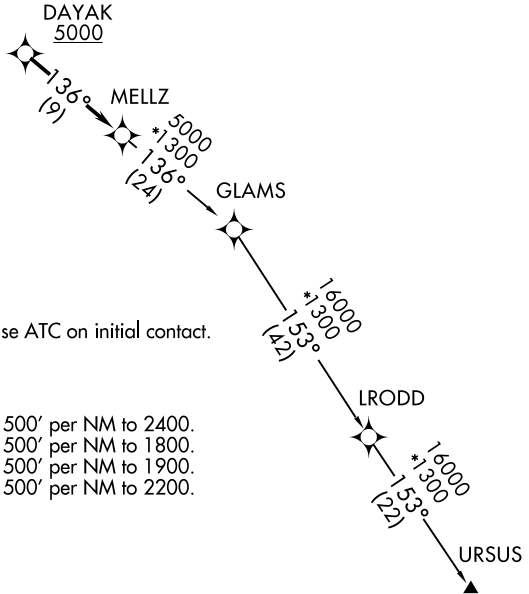
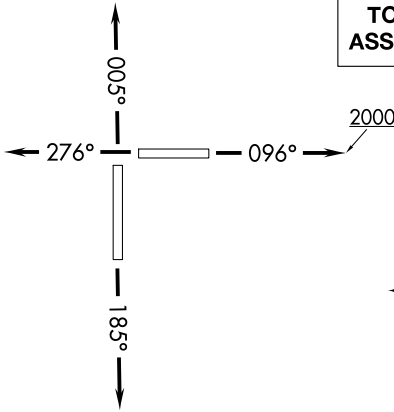
AL-10263 (FAA)

# MELLZ TWO DEPARTURE (RNAV)

MIAMI HOMESTEAD GENERAL AVIATION (X51)  
HOMESTEAD, FLORIDA

**TOP ALTITUDE:  
ASSIGNED BY ATC**

AWOS-3  
118.375  
KHST ATIS\*  
132.275 269.9  
TMB ATIS  
124.0  
CTAF  
122.8  
MIAMI DEP CON  
125.5 354.1



NOTE: If unable to accept climb rate, advise ATC on initial contact.

### TAKEOFF MINIMUMS

- Rwy 10: Standard with minimum climb of 500' per NM to 2400.
- Rwy 18: Standard with minimum climb of 500' per NM to 1800.
- Rwy 28: Standard with minimum climb of 500' per NM to 1900.
- Rwy 36: Standard with minimum climb of 500' per NM to 2200.

RNAV 1-DME/DME/IRU or GPS.

RADAR required for non-GPS equipped aircraft.

NOTE: Chart not to scale.

### DEPARTURE ROUTE DESCRIPTION

**TAKEOFF RUNWAY 10:** Climb on heading 096° to 2000 then as assigned by ATC for RADAR vectors to cross DAYAK at or above 5000 thence. . . .

**TAKEOFF RUNWAY 18:** Climb on heading 185° or as assigned by ATC for RADAR vectors to cross DAYAK at or above 5000 thence. . . .

**TAKEOFF RUNWAY 28:** Climb on heading 276° or as assigned by ATC for RADAR vectors to cross DAYAK at or above 5000 thence. . . .

**TAKEOFF RUNWAY 36:** Climb on heading 005° or as assigned by ATC for RADAR vectors to cross DAYAK at or above 5000 thence. . . .

. . . on track 136° to MELLZ, then on assigned transition. Maintain ATC assigned altitude, expect clearance to filed altitude within 10 minutes after departure.

GLAMS TRANSITION (MELLZ2.GLAMS)

URSUS TRANSITION (MELLZ2.URSUS)

# MELLZ TWO DEPARTURE (RNAV)

(MELLZ2.MELLZ) 19MAY22

HOMESTEAD, FLORIDA  
MIAMI HOMESTEAD GENERAL AVIATION (X51)

SE-3, 26 DEC 2024 to 23 JAN 2025

SE-3, 26 DEC 2024 to 23 JAN 2025