

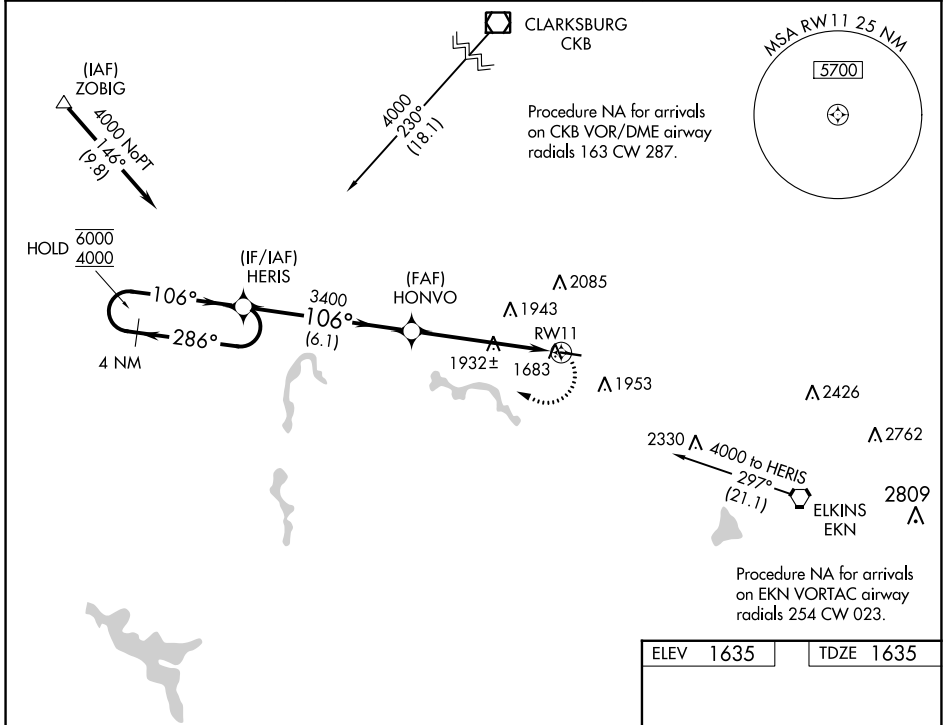
WAAS CH <b>72724</b> <b>W11A</b>	APP CRS <b>106°</b>	Rwy Idg TDZE Apt Elev	<b>4201</b> <b>1635</b> <b>1635</b>
--	------------------------	-----------------------------	---

# RNAV (GPS) RWY 11

UPSHUR COUNTY RGNL (W22)

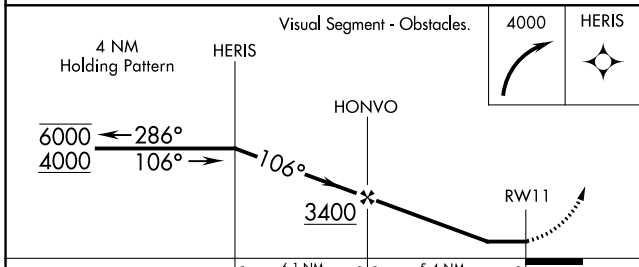
RNP APCH - GPS.	MISSED APPROACH: Climbing right turn to 4000 direct HERIS and hold.
Rwy 11 helicopter visibility reduction below 3/4 SM NA.	

AWOS-3 <b>119.975</b>	CLARKSBURG APP CON ★ <b>121.15 284.65</b>	UNICOM <b>122.8 (CTAF) 0</b>
--------------------------	--	---------------------------------

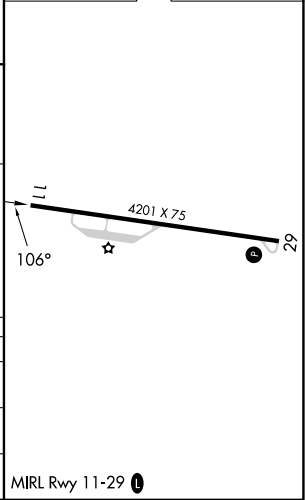


NE-4, 26 DEC 2024 to 23 JAN 2025

NE-4, 26 DEC 2024 to 23 JAN 2025



ELEV 1635	TDZE 1635
-----------	-----------



CATEGORY	A	B	C	D
LP MDA	2200-1	565 (600-1)	2200-1 5/8 565 (600-1 5/8)	NA
RNAV MDA	2240-1	605 (700-1)	2240-1 3/4 605 (700-1 3/4)	NA
CIRCLING	2240-1 605 (700-1)	2260-1 625 (700-1)	2400-2 1/4 765 (800-2 1/4)	NA

MIRL Rwy 11-29 0