

WAAS CH 49004 W18A	APP CRS 175°	Rwy Idg 6610 TDZE 166 Apt Elev 166
--	------------------------	---

RNAV (GPS) RWY 18

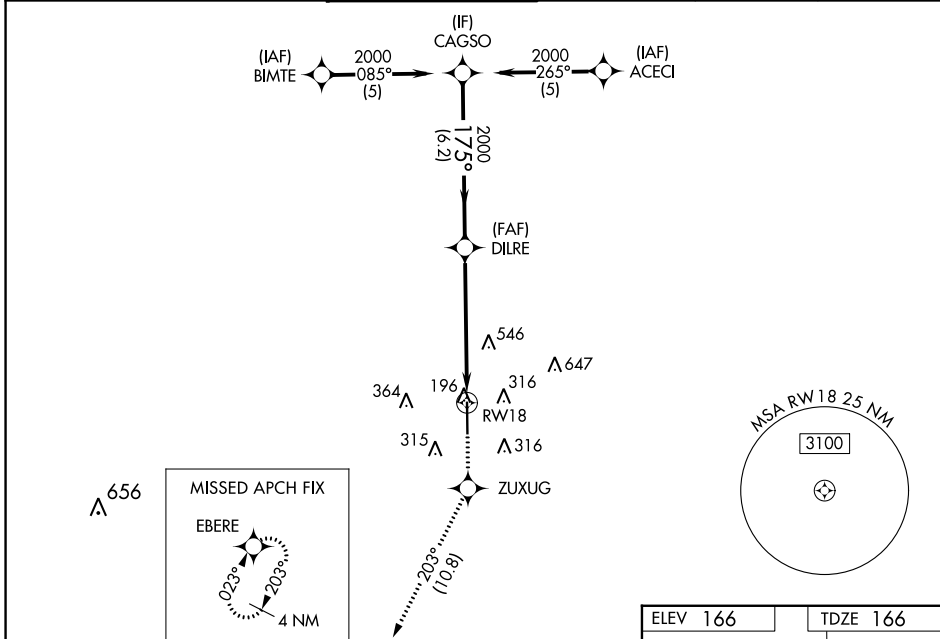
HOUSTON EXEC (TME)

RNP APCH - GPS.

Baro-VNAV NA when using David Wayne Hooks Meml altimeter setting. For uncompensated Baro-VNAV systems, LNAV/VNAV NA below -15°C or above 48°C. VDP NA when using David Wayne Hooks Meml altimeter setting. Helicopter visibility reduction below 3/4 SM NA. When local altimeter setting not received, use David Wayne Hooks Meml altimeter setting and increase all DA 57 feet and all MDA 60 feet; increase LNAV/VNAV all Cats and LNAV Cat C/D visibility 1/8 mile, and Circling Cat C/D visibility 1/4 mile.

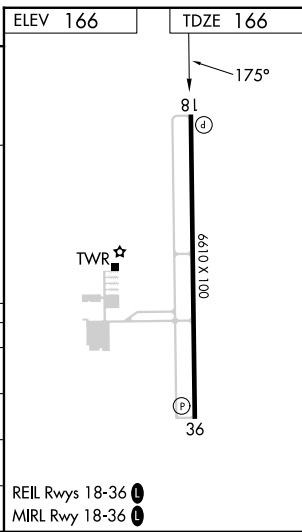
MISSED APPROACH: Climb to 2000 direct ZUXUG and on track 203° to EBERE and hold.

ATIS 119.525	HOUSTON APP CON 123.8 257.7	EXECUTIVE TOWER ★ 126.975 (CTAF)	GND CON 132.075	CLNC DEL 132.075	UNICOM 122.975
------------------------	---------------------------------------	--	---------------------------	----------------------------	--------------------------



SC-5, 26 DEC 2024 to 23 JAN 2025

SC-5, 26 DEC 2024 to 23 JAN 2025



CAGSO	DILRE	ZUXUG	EBERE
2000	2000	tr 203°	
GP 3.00° TCH 40			
6.2 NM	3.7 NM	1.8	

CATEGORY	A	B	C	D
LPV DA	416-1 250 (300-1)			
LNAV/VNAV DA	708-2 542 (600-2)			
LNAV MDA	780-1 614 (700-1)	780-1 3/4 614 (700-1 3/4)		
CIRCLING	820-1 654 (700-1)	860-2 694 (700-2)	1000-2 3/4 834 (900-2 3/4)	

REIL Rwy 18-36
MIRL Rwy 18-36