

APP CRS **097°**
 Rwy Idg **4300**
 TDZE **135**
 Apt Elev **135**

RNAV (GPS) RWY 10
 TAPPAHANNOCK/ESSEX COUNTY (XSA)

RNP APCH - GPS.

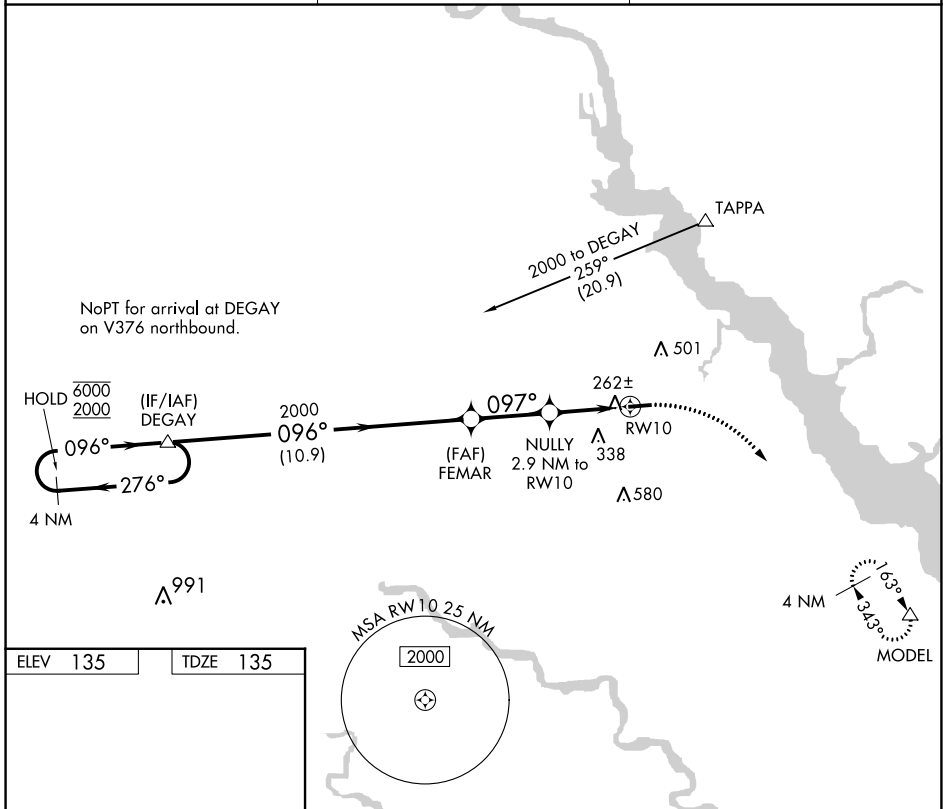
⚠ Rwy 10 helicopter visibility reduction below 3/4 SM NA.

MISSED APPROACH: Climbing right turn to 2000 direct MODEL and hold.

AWOS-3
125.775

POTOMAC APP CON
126.4 282.375

UNICOM
122.8 (CTAF) 0

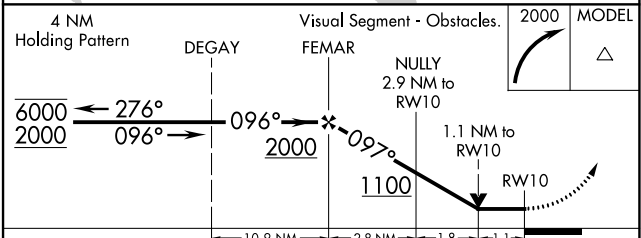
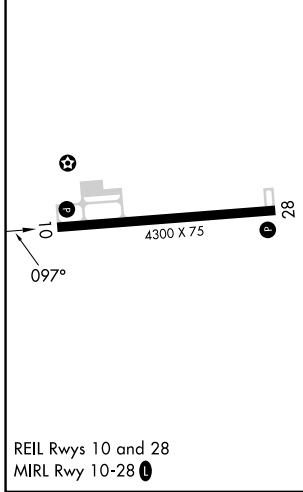


NoPT for arrival at DEGAY on V376 northbound.

NE-3, 26 DEC 2024 to 23 JAN 2025

NE-3, 26 DEC 2024 to 23 JAN 2025

ELEV 135 TDZE 135



CATEGORY	A	B	C	D
LNAV MDA	540-1	405 (500-1)	NA	
C CIRCLING	580-1 445 (500-1)	640-1 505 (600-1)	820-2 685 (700-2)	NA