

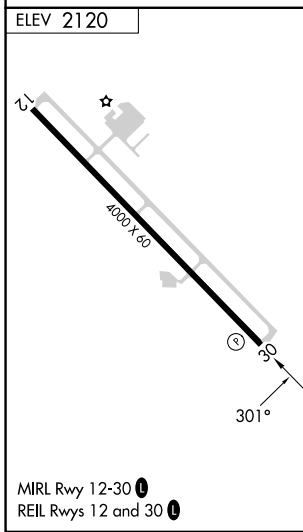
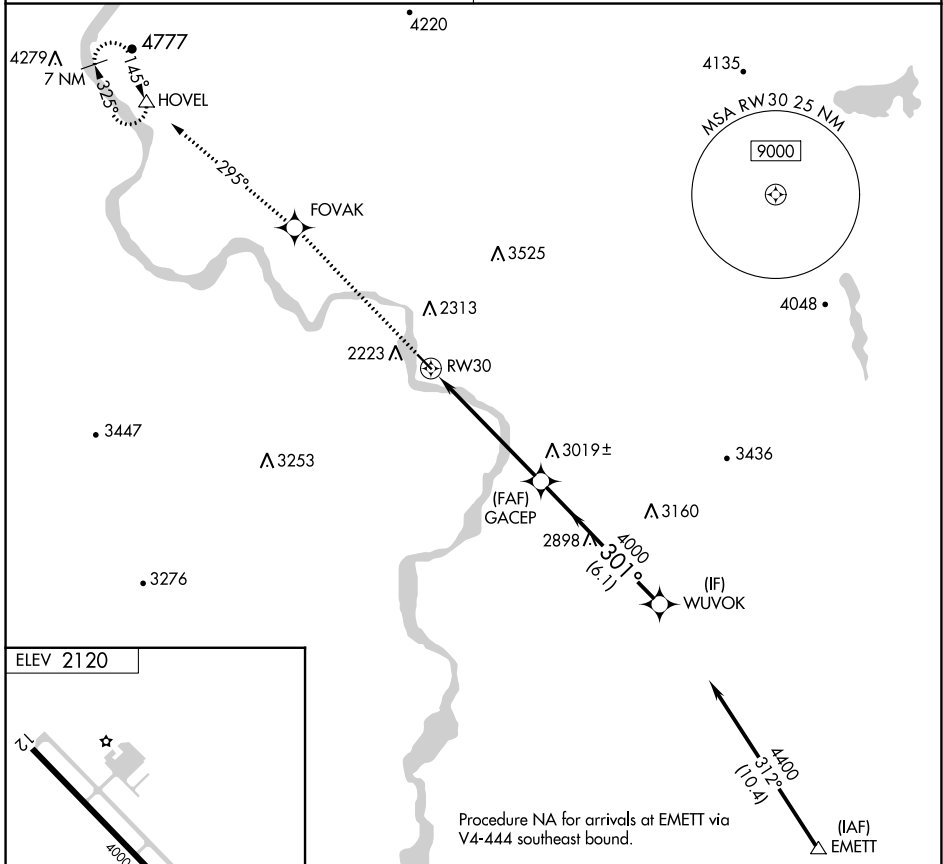
APP CRS	Rwy Idg	N/A
301°	TDZE	N/A
	Apt Elev	2120

# RNAV (GPS)-A

WEISER MUNI (S87)

RNP APCH - GPS.	MISSED APPROACH: Climb to 9000 direct FOVAK and via 295° track to HOVEL and hold, continue climb-in-hold to 9000.
<p>Procedure NA at night. Use Ontario altimeter setting; when not received, use Boise altimeter setting and increase all MDAs 160 feet.</p>	

SALT LAKE CENTER <b>128.05 306.95</b>	UNICOM <b>122.8 (CTAF)</b>
--	-------------------------------



9000	FOVAK	295° tr	HOVEL	WUVOK	
↑	☀		△		
RW30			GACEP	4400	Procedure Turn NA
5.7 NM			301°	4000	
≤ 3.05° TCH 50			6.1 NM		
CATEGORY	A	B	C	D	
CIRCLING	3480-1¼ 1360 (1400-1¼)	3480-1½ 1360 (1400-1½)	3480-3 1360 (1400-3)	3620-3 1500 (1500-3)	

NW-1, 26 DEC 2024 to 23 JAN 2025

NW-1, 26 DEC 2024 to 23 JAN 2025