

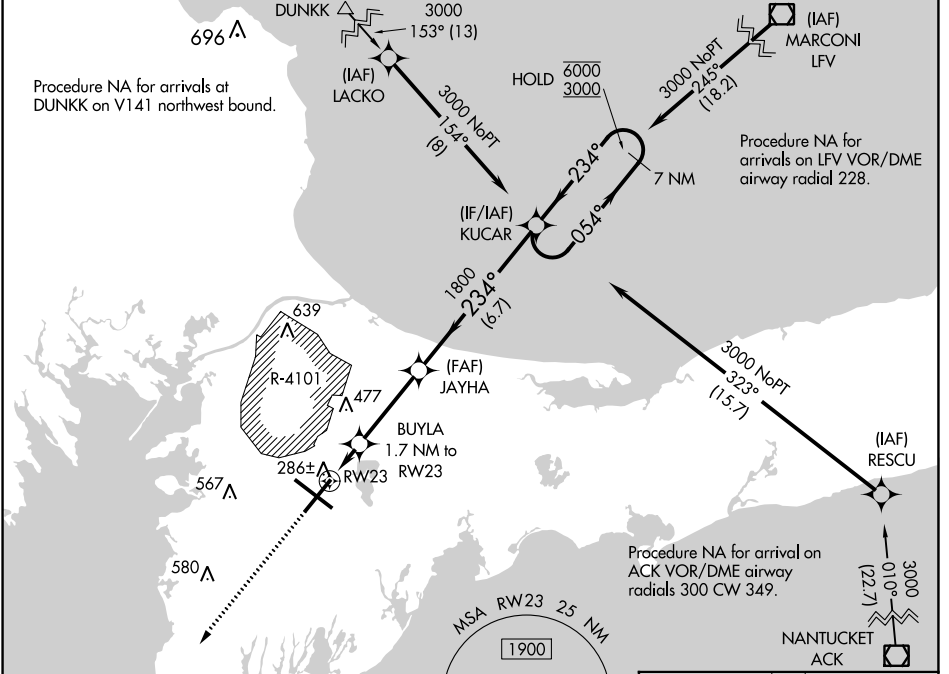
WAAS CH 97337 W23A	APP CRS 234°	Rwy Idg TDZE Apt Elev	8000 126 130
--	------------------------	-----------------------------	---

RNAV (GPS) RWY 23

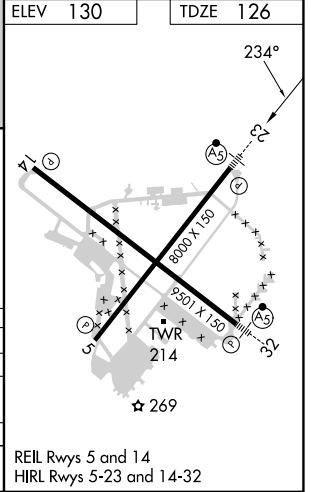
CAPE COD COAST GUARD AIR STATION (F'MH)

RNP APCH. ▲ For uncompensated Baro-VNAV systems, procedure NA below -15°C or above 54°C. Circling NA NE of Rwy 14 and NW of Rwy 23. For inop ALS, increase LNAV/VNAV all Cats visibility to RVR 5500 and LNAV Cats C and D visibility to RVR 6000.	MALSR 	MISSED APPROACH: Climb to 3000 direct GLESO and hold.
---	-----------	--

ATIS 120.475 236.825	BOSTON APP CON 118.2 284.6	COAST GUARD TOWER 128.425 291.1	GND CON 124.15 275.8
--------------------------------	--------------------------------------	---	--------------------------------



ELEV 130	TDZE 126
3000	GLESO *LNAV only.
↑	↑
RWY 23	JAYHA 1800
*1.1 NM to RWY 23	BUYLA 1.7 NM to RWY 23
720*	1800
234°	234°
7 NM	7 NM
GP 3.00°	TCH 54
6000	3000
054°	234°
1.1 NM	0.6 NM
3.4 NM	6.7 NM
CATEGORY	A B C D
LPV DA	326/24 200 (200-½)
LNAV/VNAV DA	467/30 341 (400-¾)
LNAV MDA	540/24 414 (500-½) 540/40 414 (500-¾)
▲ CIRCLING	580-1 450 (500-1) 640-1 510 (600-1) 900-2¼ 770 (800-2¼) 900-2½ 770 (800-2½)



NE-1, 26 DEC 2024 to 23 JAN 2025

NE-1, 26 DEC 2024 to 23 JAN 2025