

WAAS CH 78142 W17A	APP CRS 172°	Rwy Idg 4600 TDZE 3187 Apt Elev 3187
--	------------------------	---

RNAV (GPS) RWY 17

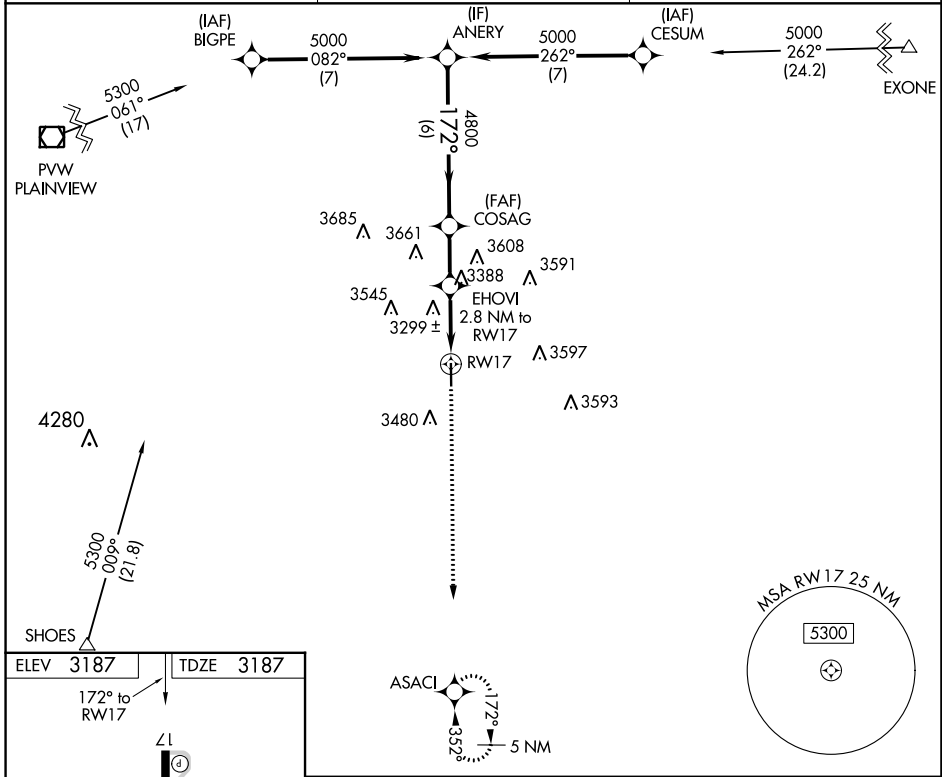
FLOYDADA MUNI (41F')

RNP APCH.

▼ Rwy 17 helicopter visibility reduction below 3/4 SM NA. Use Plainview altimeter setting, when not received, use Lubbock altimeter setting and increase all MDA 20 feet; increase LNAV Cat C visibility 3/8 SM and Circling Cat C visibility 1/4 SM.

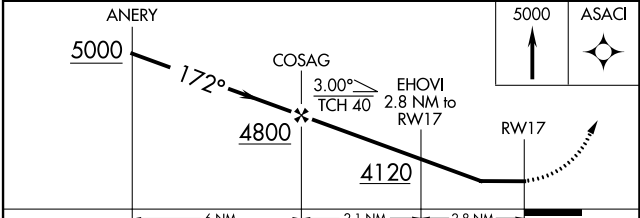
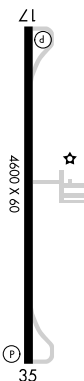
MISSED APPROACH: Climb to 5000 direct ASACI and hold.

PVV AWOS-3 119.675	LUBBOCK APP CON 119.2 351.8	UNICOM 122.8 (CTAF) 0
------------------------------	---------------------------------------	---------------------------------



ELEV 3187	TDZE 3187
-----------	-----------

172° to RWY 17



CATEGORY	A	B	C	D
LP MDA	3640-1	453 (500-1)	3640-1 3/8 453 (500-1 3/8)	NA
LNAV MDA	3720-1	533 (600-1)	3720-1 1/2 533 (600-1 1/2)	NA
C CIRCLING	3840-1 653 (700-1)	3920-1 733 (800-1)	3980-2 1/4 793 (800-2 1/4)	NA

MIRL Rwy 17-35 **0**

SC-2, 26 DEC 2024 to 23 JAN 2025

SC-2, 26 DEC 2024 to 23 JAN 2025