

APP CRS <b>343°</b>	Rwy Idg TDZE Apt Elev	<b>N/A</b> <b>N/A</b> <b>35</b>
------------------------	-----------------------------	---------------------------------------

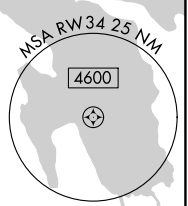
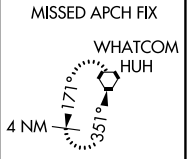
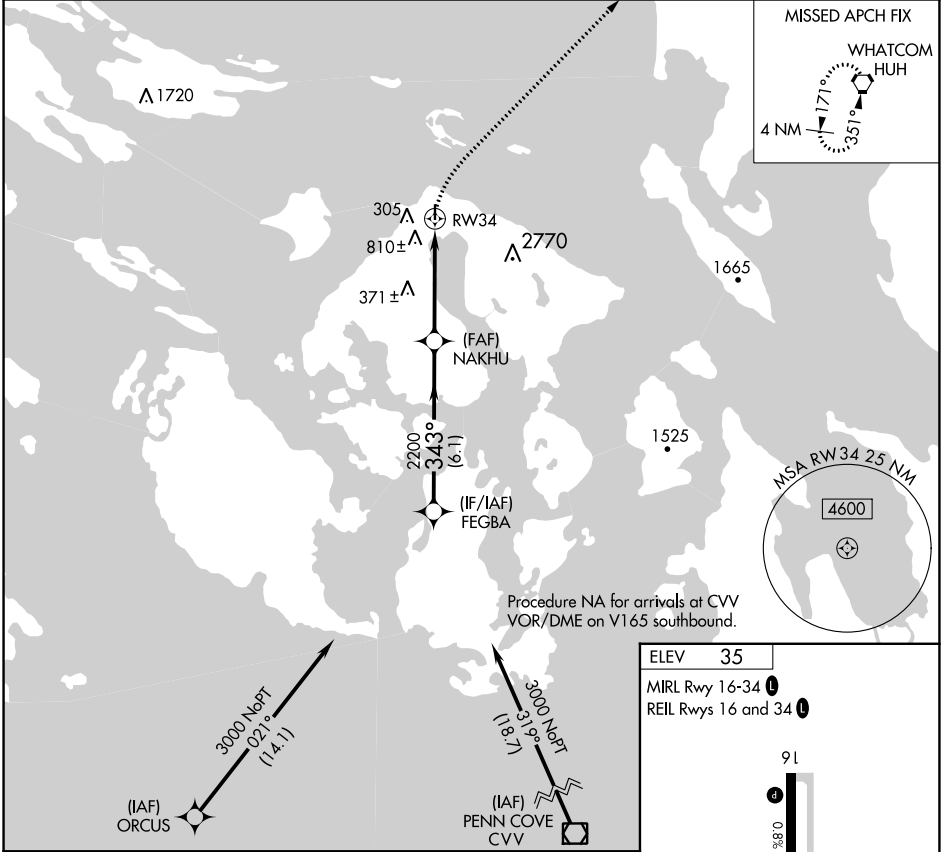
# RNAV (GPS)-A

## ORCAS ISLAND (ORS)

**▼** DME/DME RNP-0.3 NA. Helicopter visibility reduction below 1 SM NA.  
**▲** When local altimeter setting not received, use Friday Harbor altimeter setting and increase MDA 40 feet. Night landing: Rwy 34 NA.

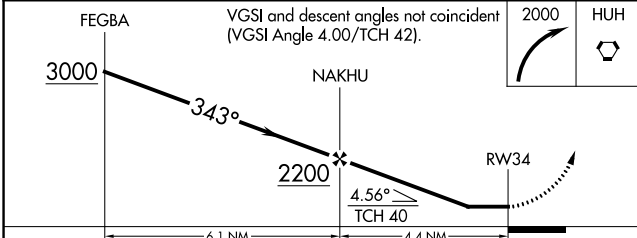
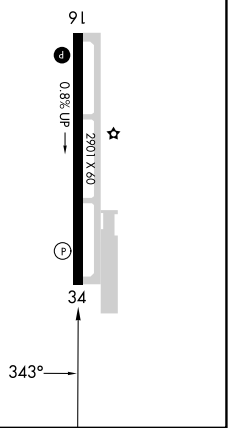
**MISSED APPROACH:** Climbing right turn to 2000 direct HUH VORTAC and hold.

AWOS-3P <b>135.425</b>	WHIDBEY APP CON <b>118.2 285.65 (SOUTH)</b>	VICTORIA APP CON <b>132.7 290.8 (NORTH)</b>	CTAF <b>128.25 0</b>
---------------------------	--	--	-------------------------



Procedure NA for arrivals at CVV  
 VOR/DME on V165 southbound.

ELEV	<b>35</b>
MIRL Rwy 16-34	<b>0</b>
REIL Rwys 16 and 34	<b>0</b>



CATEGORY	A	B	C	D
<b>C</b> CIRCLING	1120-1¼ 1085 (1100-1¼)	1820-1½ 1785 (1800-1½)	NA	

NW-1, 26 DEC 2024 to 23 JAN 2025

NW-1, 26 DEC 2024 to 23 JAN 2025