

WAAS CH <b>53338</b> <b>W34A</b>	APP CRS <b>341°</b>	Rwy Idg TDZE Apt Elev	<b>3900</b> <b>2071</b> <b>2073</b>
--	------------------------	-----------------------------	---

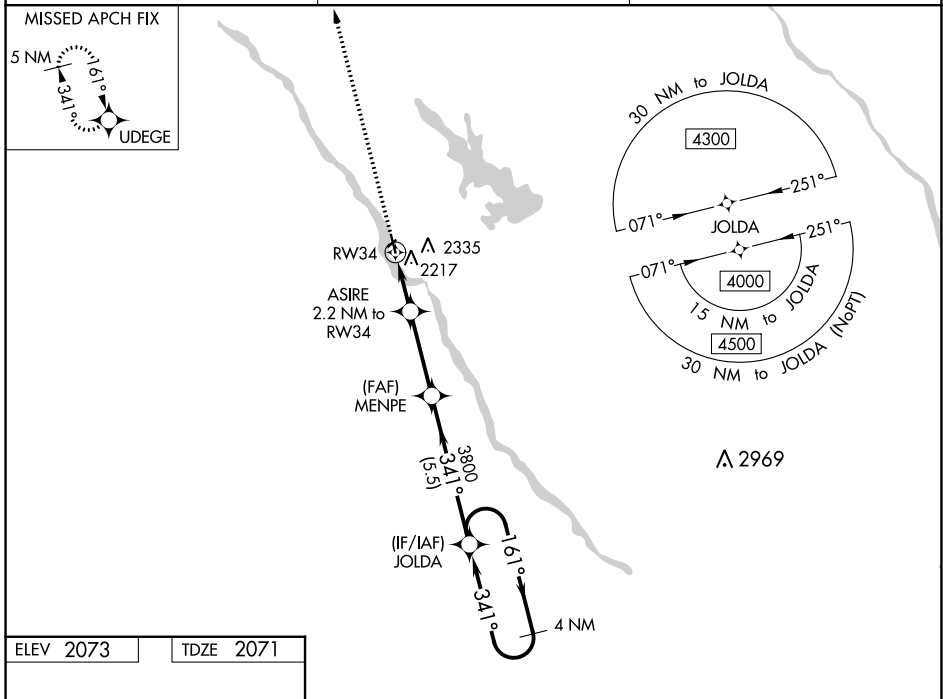
# RNAV (GPS) RWY 34

LOUP CITY MUNI (ØF4)

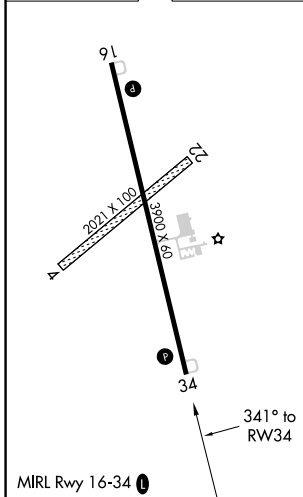
**NA** DME/DME RNP-0.3 NA. Baro-VNAV NA. Use Evelyn Sharp Field altimeter setting; when not received, use Broken Bow altimeter setting and increase LPV DA to 2459 and all visibilities  $\frac{3}{8}$  mile, LNAV/VNAV DA to 2500 and all visibilities  $\frac{3}{8}$  mile; increase all MDA 100 feet. Helicopter visibility reduction below 1 SM NA. Circling NA to Rwy's 4 and 22.

**MISSED APPROACH:**  
Climb to 4100 direct UDEGE and hold.

ODX ASOS <b>119.925</b>	MINNEAPOLIS CENTER <b>126.05 278.8</b>	CTAF <b>122.9</b> <b>Ø</b>
----------------------------	---	-------------------------------



ELEV 2073	TDZE 2071
-----------	-----------



4100	UDEGE	* LNAV only	4 NM Holding Pattern	
ASIRE 2.2 NM to RW34	MENPE 3800	JOLDA	4000	
RW34	3800	161° →	← 341°	
*2800	3800	GP 3.00°	TCH 40	
2.2 NM	3.1 NM	5.5 NM		
CATEGORY	A	B	C	D
LPV DA	2369-1	298 (300-1)		NA
LNAV/VNAV DA	2410-1 $\frac{1}{8}$	339 (400-1 $\frac{1}{8}$ )		NA
LNAV MDA	2520-1	449 (500-1)		NA
<b>CIRCLING</b>	2720-1 647 (700-1)	2740-1 667 (700-1)		NA

NC-2, 26 DEC 2024 to 23 JAN 2025

NC-2, 26 DEC 2024 to 23 JAN 2025