

WAAS CH 40232 W36A	APP CRS 356°	Rwy Idg TDZE Apt Elev	5000 1999 1999
--	------------------------	-----------------------------	---

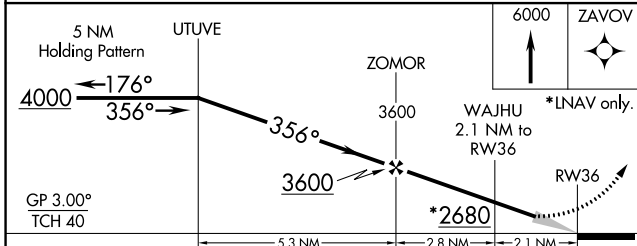
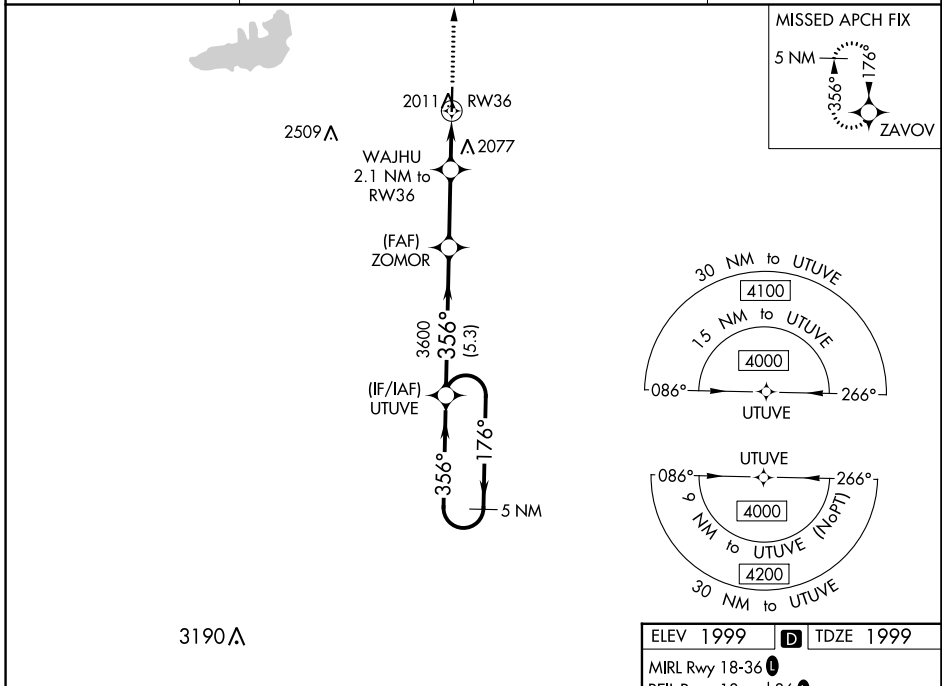
RNAV (GPS) RWY 36

ROOKS COUNTY RGNL (RCP)

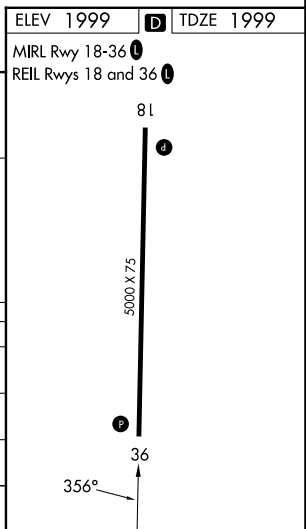
NA Baro-VNAV NA. Use Hill City altimeter setting; when not received, use Hays Rgnl altimeter setting. Circling NA west of Rwy 18-36.
DME/DME RNP-0.3 NA.

MISSED APPROACH: Climb to 6000 direct ZAVOV and hold, continue climb-in-hold to 6000.

AWOS-AV 120.075	HLC ASOS 118.425	DENVER CENTER 132.7 226.675	CTAF 122.9
---------------------------	----------------------------	---------------------------------------	----------------------



CATEGORY	A	B	C	D
LPV DA	2290-1 291 (300-1)			NA
LNAV/VNAV DA	2340-1½ 341 (400-1½)			NA
LNAV MDA	2420-1 421 (500-1)		2420-1¼ 421 (500-1¼)	NA
C CIRCLING	2460-1 461 (500-1)	2480-1 481 (500-1)	2500-1½ 501 (600-1½)	NA



NC-2, 26 DEC 2024 to 23 JAN 2025

NC-2, 26 DEC 2024 to 23 JAN 2025