

WAAS CH 93944 W28A	APP CRS 277°	Rwy Idg TDZE Apt Elev	3499 777 777
--	------------------------	-----------------------------	---

RNAV (GPS) RWY 28

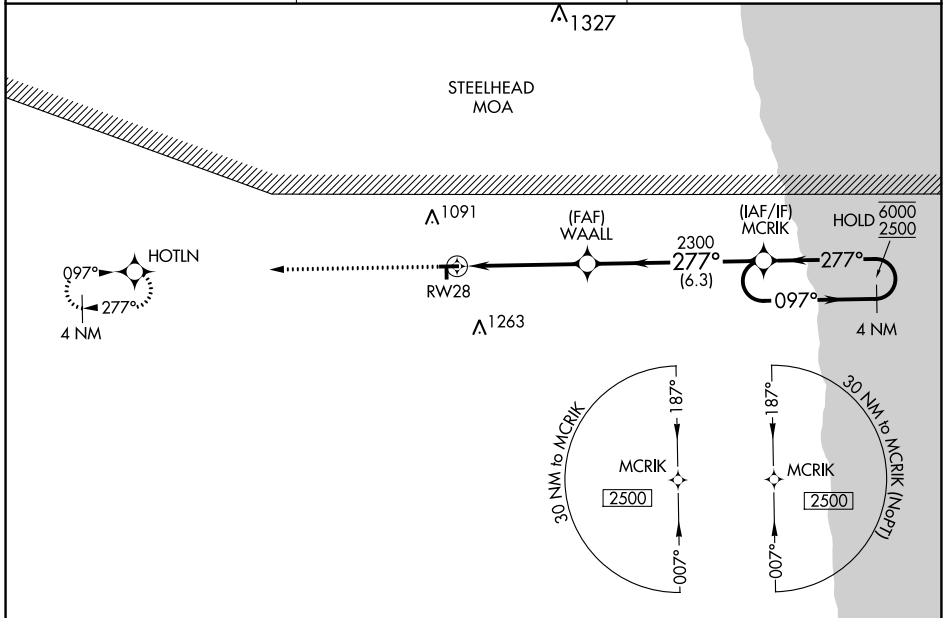
SANDUSKY CITY (Y83)

RNP APCH - GPS.

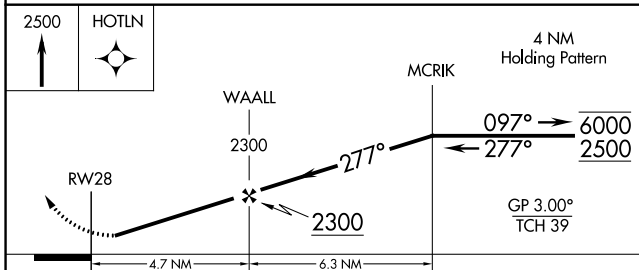
Circling NA to Rws 18 and 36. Circling NA north of Rwy 10-28. Procedure NA at night.
 Rwy 28 helicopter visibility reduction below 1 SM NA. Baro-VNAV NA. Use Bad Axe altimeter setting.

MISSED APPROACH:
Climb to 2500 direct
HOTLN and hold.

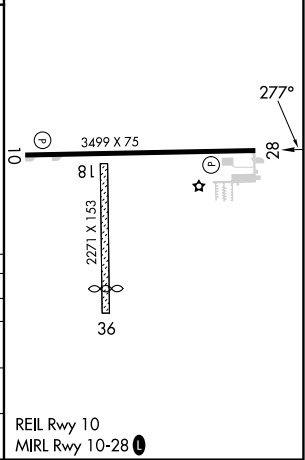
BAX AWOS-3 118.6	CLEVELAND CENTER 127.7 290.425	UNICOM 122.8 (CTAF) 0
----------------------------	--	---------------------------------



ELEV 777	TDZE 777
----------	----------



CATEGORY	A	B	C	D
LPV DA	1077-1		300 (300-1)	NA
LNAV/VNAV DA	1077-1		300 (300-1)	NA
LNAV MDA	1260-1	483 (500-1)	1260-1 ³ / ₈ 483 (500-1 ³ / ₈)	NA
CIRCLING	1260-1 483 (500-1)	1340-1 563 (600-1)	1680-2 ³ / ₄ 903 (1000-2 ³ / ₄)	NA



EC-1, 26 DEC 2024 to 23 JAN 2025

EC-1, 26 DEC 2024 to 23 JAN 2025