

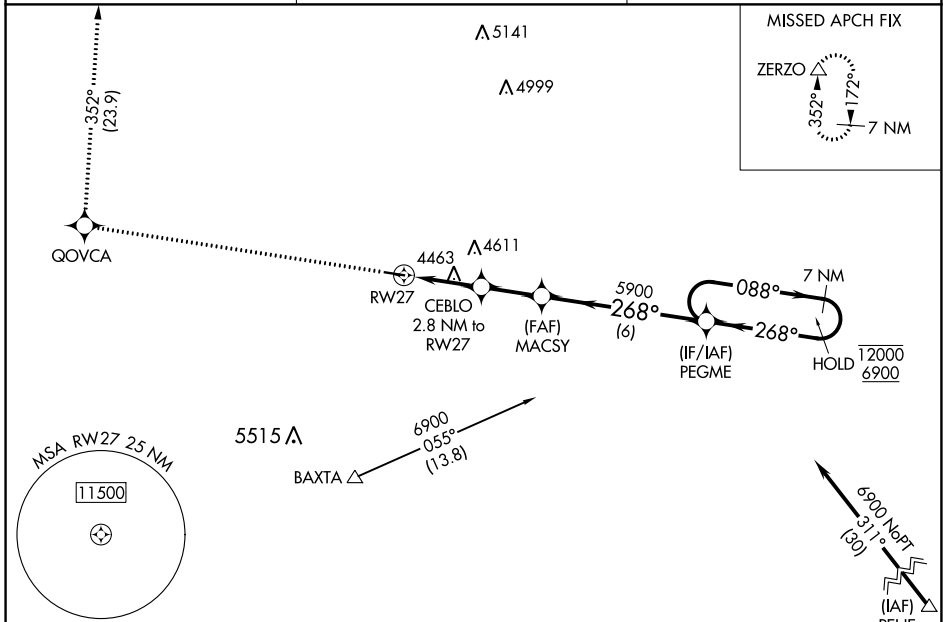
WAAS CH <b>62943</b> W <b>27A</b>	APP CRS <b>268°</b>	Rwy Idg <b>4200</b> TDZE <b>4295</b> Apt Elev <b>4312</b>
---	------------------------	---

# RNAV (GPS) RWY 27

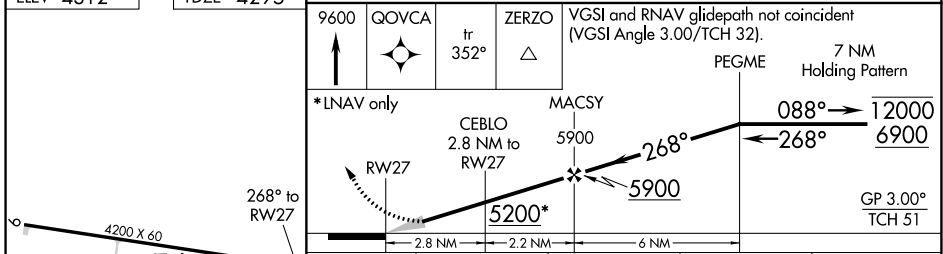
WHEATLAND COUNTY AT HARLOWTON (HWQ)

RNP APCH.	MISSED APPROACH: Climb to 9600 direct QOVCA and on track 352° to ZERZO and hold. # Missed approach requires minimum climb of 220 feet per NM to 9200.
NA Circling Rwy 9 NA at night. Baro-VNAV NA. Use Lewistown altimeter setting.	

LWT ASOS <b>118.375</b>	SALT LAKE CENTER <b>127.75 351.9</b>	CTAF <b>122.9 0</b>
----------------------------	---	------------------------



ELEV 4312	TDZE 4295
-----------	-----------



CATEGORY	A	B	C	D
LPV DA#	4606-1	311 (300-1)		NA
LPV DA	4950-1 $\frac{7}{8}$	655 (700-1 $\frac{7}{8}$ )		NA
LNAV/VNAV DA	4999-2	704 (700-2)		NA
LNAV MDA	5140-1 845 (900-1)	5140-1 $\frac{1}{4}$ 845 (900-1 $\frac{1}{4}$ )		NA
CIRCLING	5140-1 $\frac{1}{4}$	828 (900-1 $\frac{1}{4}$ )		NA

NW-1, 26 DEC 2024 to 23 JAN 2025

NW-1, 26 DEC 2024 to 23 JAN 2025