

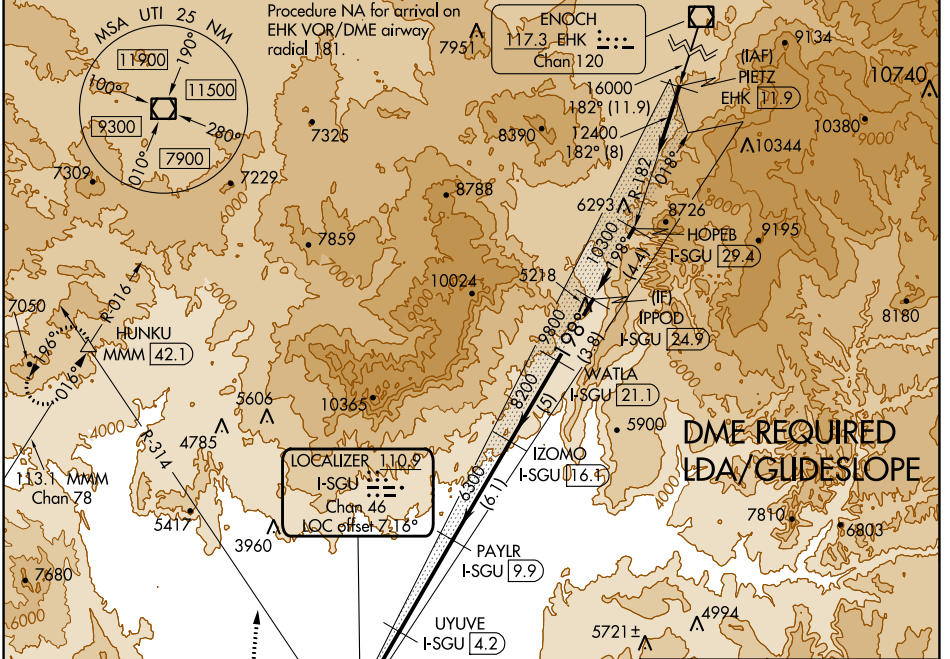
LOC/DME I-SGU <b>110.9</b> Chan <b>46</b>	APP CRS <b>198°</b>	Rwy Idg TDZE Apt Elev <b>9300</b> <b>2884</b> <b>2884</b>
---	------------------------	--

# LDA RWY 19

ST GEORGE RGNL (SGU)

<p><b>V</b> DME required. For inop ALS, increase S-LDA/GS 19 all Cats visibility to 7/8 SM.</p> <p><b>NA</b> -6°C</p>	<p><b>MALSR</b></p>	<p><b>MISSED APPROACH:</b> Climb to 4200 then climbing right turn to 9800 on heading 354° and UTI VOR/DME R-314 to HUNKU INT/ MMM 42.1 DME and hold, continue climb-in-hold to 9800.</p>
---	---------------------	--

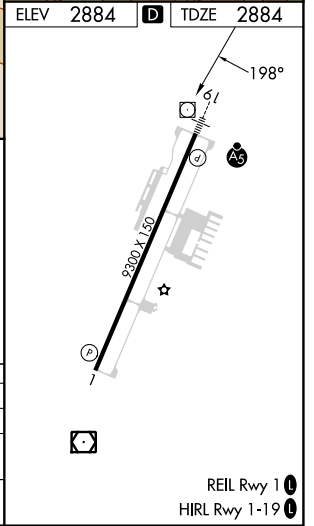
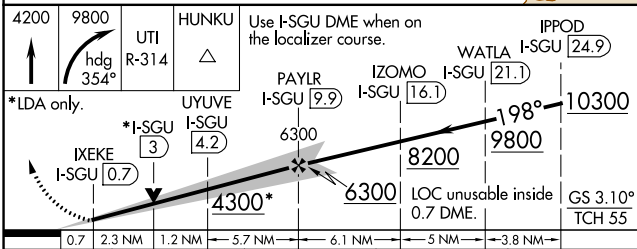
AWOS-3PT <b>135.075</b>	LOS ANGELES CENTER <b>124.2 343.6</b>	CLNC DEL <b>133.3</b>	UNICOM <b>123.075 (CTAF)</b>
----------------------------	--	--------------------------	---------------------------------



SW-4, 26 DEC 2024 to 23 JAN 2025

SW-4, 26 DEC 2024 to 23 JAN 2025

ELEV <b>2884</b>	<b>D</b>	TDZE <b>2884</b>
------------------	----------	------------------



CATEGORY	A	B	C	D
S-LDA/GS 19	3170-1/2		286 (300-1/2)	
S-LDA 19	3940-3/4 1056 (1100-3/4)	3940-1 1056 (1100-1)	3940-2 1/2	1056 (1100-2 1/2)
CIRCLING	3940-1 1/4 1056 (1100-1 1/4)	3940-1 1/2 1056 (1100-1 1/2)	3940-3 1056 (1100-3)	4660-3 1776 (1800-3)

REIL Rwy 1 **1**  
HIRL Rwy 1-19 **1**