

WAAS CH 50220 W01A	APP CRS 008°	Rwy Idg TDZE Apt Elev	9300 2851 2884
--	------------------------	-----------------------------	---

RNAV (GPS) RWY 1

ST GEORGE RGNL (SGU)

RNP APCH-GPS.

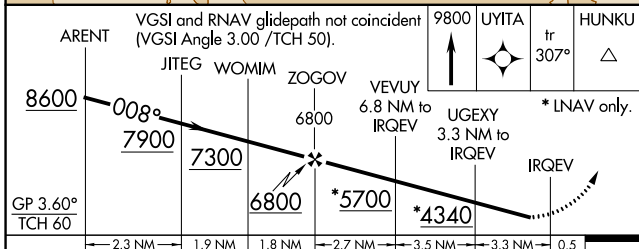
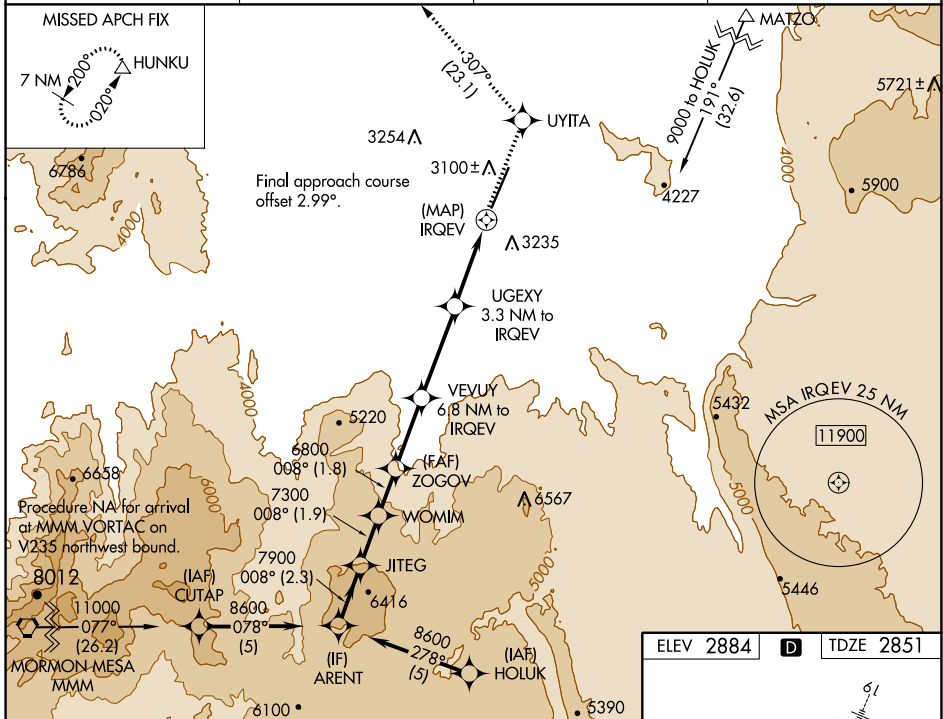
▼ Helicopter visibility reduction below 1 SM NA.

▲ # Missed approach requires a minimum climb of 225 feet per NM to 6800.

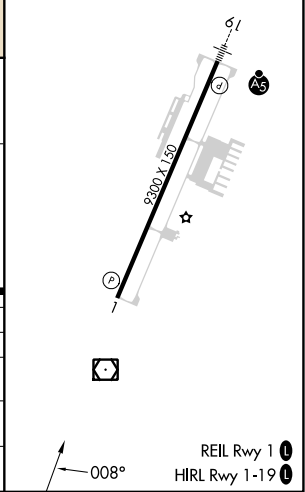
⊕ -6°C † Missed approach requires a minimum climb of 220 feet per NM to 6700.

MISSED APPROACH: Climb to 9800 direct UYITA and on track 307° to HUNKU and hold, continue climb-in-hold to 9800.

AWOS-3PT 135.075	LOS ANGELES CENTER 124.2 343.6	CLNC DEL 133.3	UNICOM 123.075 (CTAF) 0
----------------------------	--	--------------------------	--



ELEV 2884	D	TDZE 2851
-----------	----------	-----------



CATEGORY	A	B	C	D
LPV DA#	3170-1 319 (300-1)			NA
LNAV MDA †	3340-1	489 (500-1)	3340-1 3/8 489 (500-1 3/8)	NA
LNAV MDA	3760-1 1/4	909 (900-1 1/4)	3760-2 1/2 909 (900-2 1/2)	NA
CIRCLING	3760-1 1/4 876 (900-1 1/4)	3800-1 1/4 916 (1000-1 1/4)	3860-3 976 (1000-3)	NA

SW-4, 26 DEC 2024 to 23 JAN 2025

SW-4, 26 DEC 2024 to 23 JAN 2025

REIL Rwy 1 **0**
HIRL Rwy 1-19 **0**