

| | | |
|--|------------------------|---|
| WAAS CH 69542 W02A | APP CRS 023° | Rwy Idg 3800 TDZE 770 Apt Elev 782 |
|--|------------------------|---|

RNAV (GPS) RWY 2

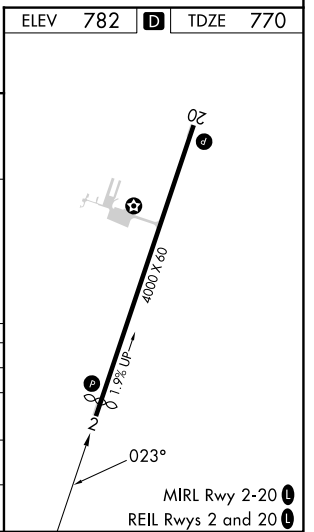
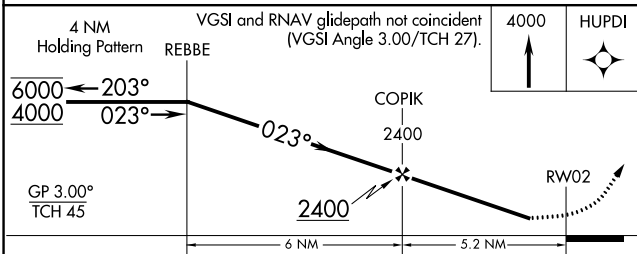
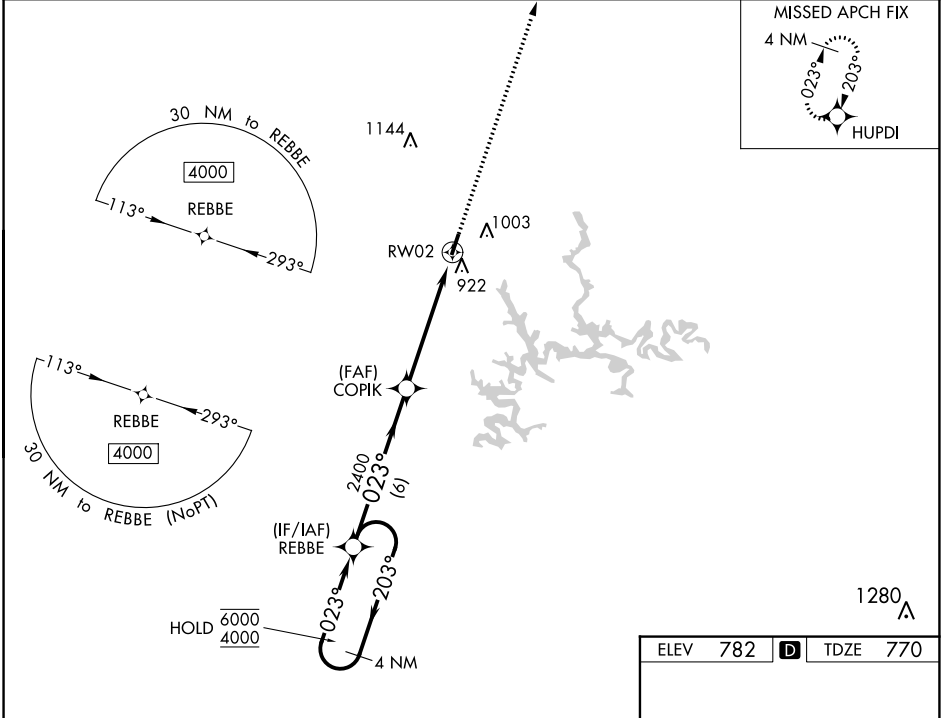
LEITCHFIELD-GRAYSON COUNTY (M20)

RNP APCH.

NA Circling Rwy 20 NA at night. Rwy 2 helicopter visibility reduction below 3/4 SM NA. Baro-VNAV NA. Use Elizabethtown altimeter setting.

MISSED APPROACH: Climb to 4000 direct HUPDI and hold, continue climb-in-hold to 4000.

| | | |
|------------------------------|--|---------------------------------|
| EKW AWOS-3 121.025 | INDIANAPOLIS CENTER 121.175 353.65 | UNICOM 123.0 (CTAF) 0 |
|------------------------------|--|---------------------------------|



| CATEGORY | A | B | C | D |
|-------------------|---------|--------------|-------------------------|----|
| LPV DA | 1140-1 | 370 (400-1) | | NA |
| LNAV/VNAV DA | 1308-1½ | 538 (600-1½) | | NA |
| LNAV MDA | 1240-1 | 470 (500-1) | 1240-1¾ 470 (500-1¾) | NA |
| C CIRCLING | 1380-1 | 598 (600-1) | 1380-1½ 598 (600-1½) | NA |

SE-1, 26 DEC 2024 to 23 JAN 2025

SE-1, 26 DEC 2024 to 23 JAN 2025