

WAAS CH <b>82220</b> <b>W16A</b>	APP CRS <b>158°</b>	Rwy Idg TDZE <b>1717</b> Apt Elev <b>1717</b>
--	------------------------	---

# RNAV (GPS) RWY 16

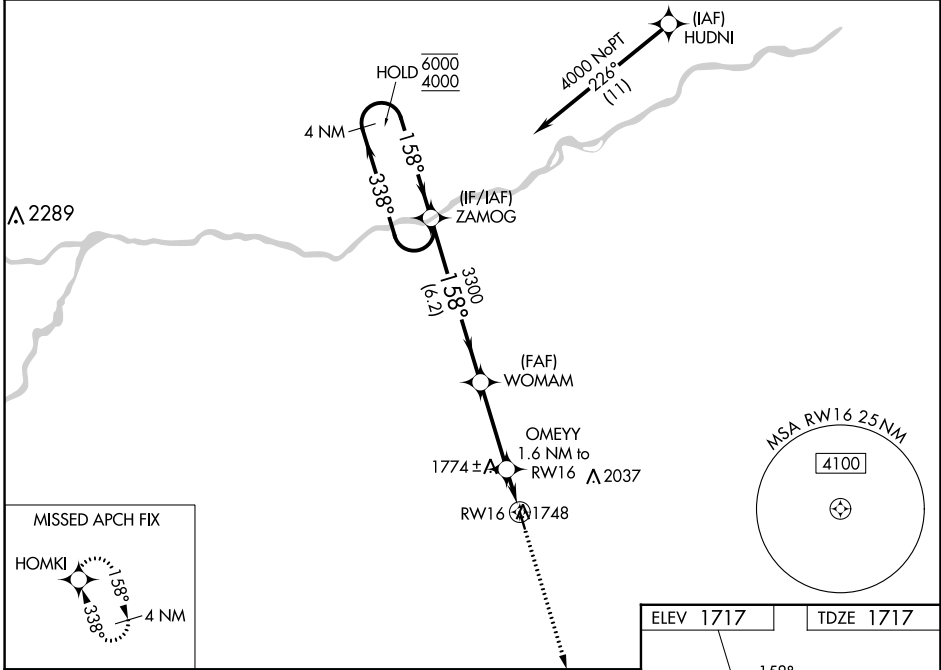
CENTRAL CITY MUNI/LARRY REINEKE FLD (Ø7K)

RNP APCH - GPS.

▼ Rwy 16 helicopter visibility reduction below ¾ SM NA. Use Aurora altimeter setting; when not received, use Grand Island altimeter setting and increase LPV DA to 2020 feet. Increase LNAV/VNAV DA to 2020 feet. Increase all MDAs 20 feet. Baro-VNAV NA.

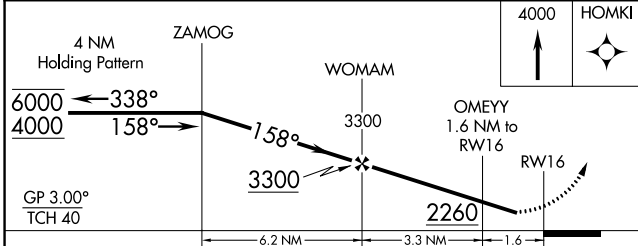
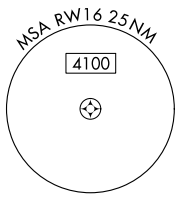
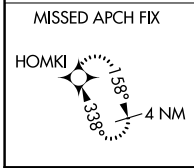
▲ NA MISSED APPROACH: Climb to 4000 direct HOMKI and hold.

MINNEAPOLIS CENTER <b>126.05 278.8</b>	CTAF <b>122.9</b>
---	----------------------

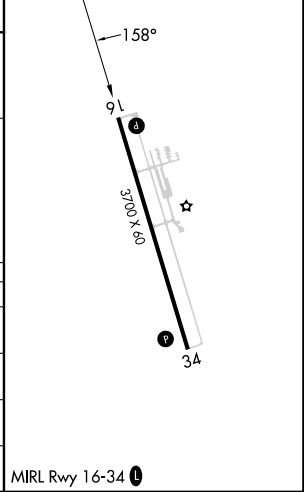


NC-2, 26 DEC 2024 to 23 JAN 2025

NC-2, 26 DEC 2024 to 23 JAN 2025



ELEV 1717	TDZE 1717
-----------	-----------



CATEGORY	A	B	C	D
LPV DA	2010-1	293 (300-1)		NA
LNAV/VNAV DA	2010-1	293 (300-1)		NA
LNAV MDA	2080-1	363 (400-1)		NA
CIRCLING	2140-1 423 (500-1)	2180-1 463 (500-1)		NA

MRL Rwy 16-34