

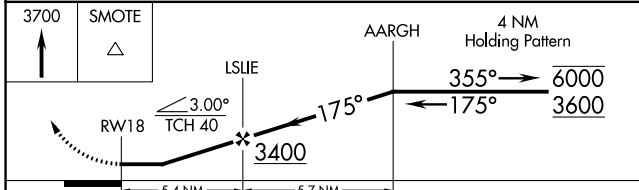
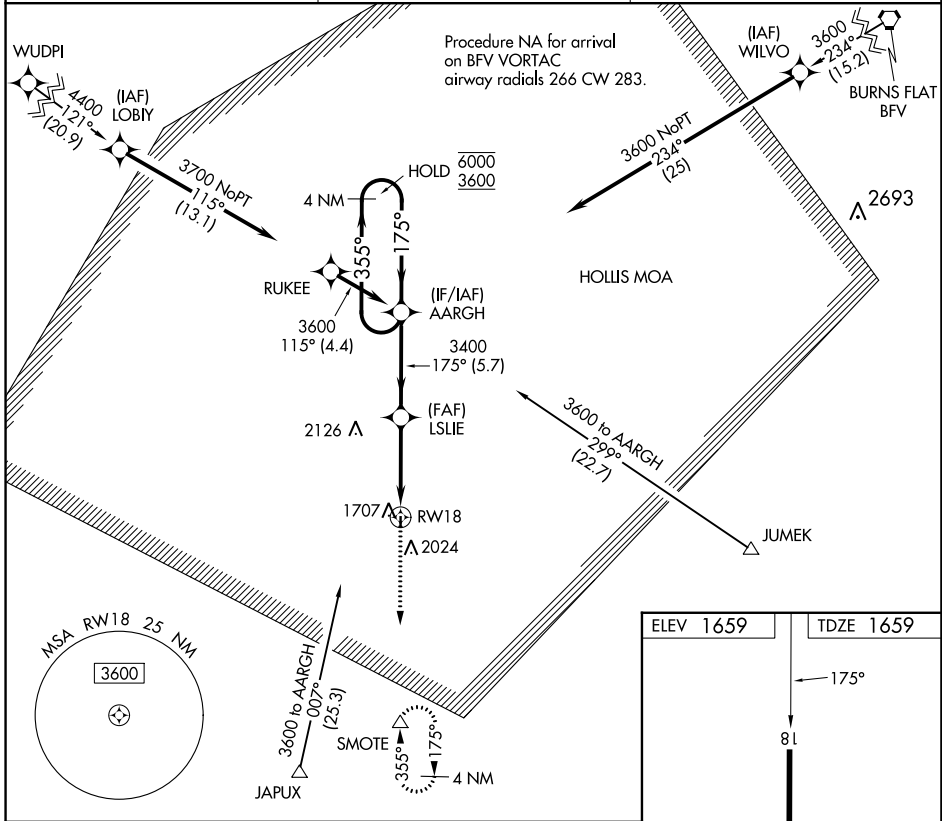
APP CRS	Rwy Idg	<b>3000</b>
<b>175°</b>	TDZE	<b>1659</b>
	Apt Elev	<b>1659</b>

# RNAV (GPS) RWY 18

HOLLIS MUNI (O35)

RNP APCH.	<p>▼ Rwy 18 helicopter visibility reduction below 1 SM NA.                  ▲ Straight-in Rwy 18 and Circling Rwy 18 NA at night.                  Use Altus/Quartz Mountain Rgnl altimeter setting.</p>	<p>MISSED APPROACH: Climb to 3700 direct SMOTE and hold.</p>

AXS AWOS-3PT <b>118.825</b>	ALTUS APP CON * <b>125.1 353.7</b>	CTAF <b>122.9</b>
--------------------------------	---------------------------------------	----------------------



ELEV 1659	TDZE 1659
<p>MIRL Rwy 18-36</p>	

CATEGORY	A	B	C	D
LNVA MDA	2400-1 741 (800-1)	2400-1¼ 741 (800-1¼)	NA	
CIRCLING	2400-1 741 (800-1)	2480-1¼ 821 (900-1¼)	NA	

SC-1, 26 DEC 2024 to 23 JAN 2025

SC-1, 26 DEC 2024 to 23 JAN 2025