

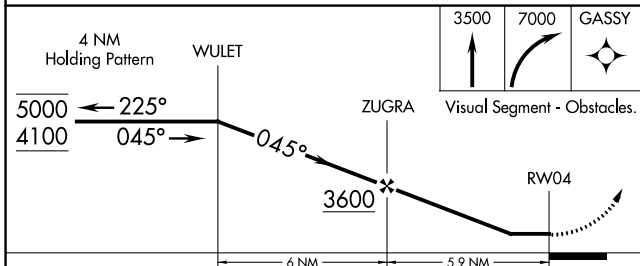
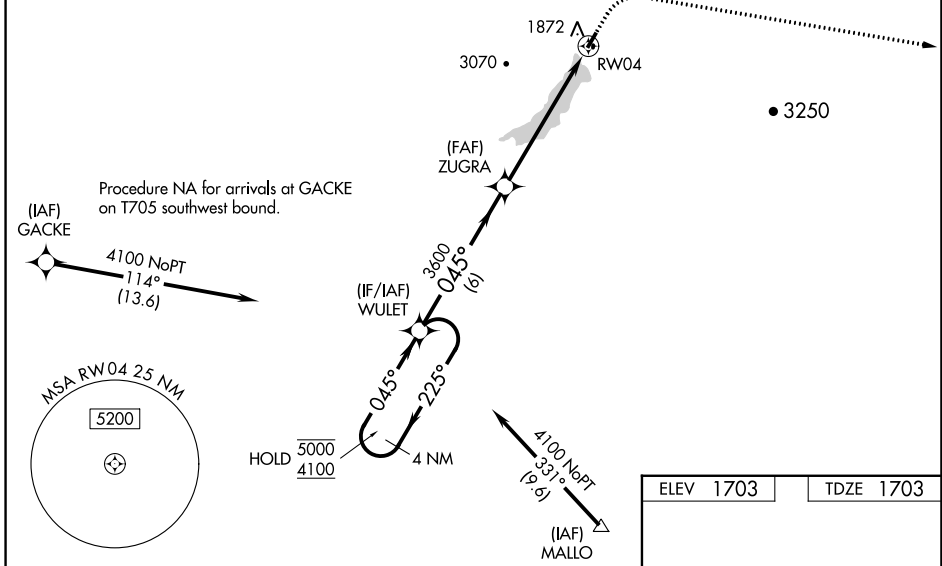
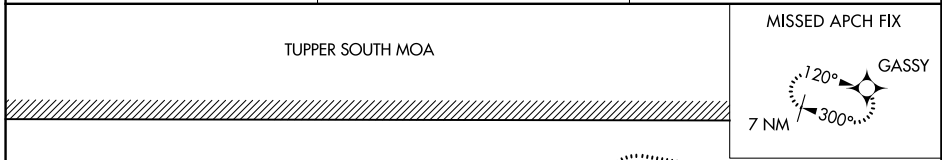
WAAS CH <b>86328</b> <b>W04A</b>	APP CRS <b>045°</b>	Rwy Idg TDZE <b>1703</b> Apt Elev <b>1703</b>	<b>3016</b> <b>1703</b> <b>1703</b>
--	------------------------	---	---

# RNAV (GPS) RWY 4

PISECO (K09)

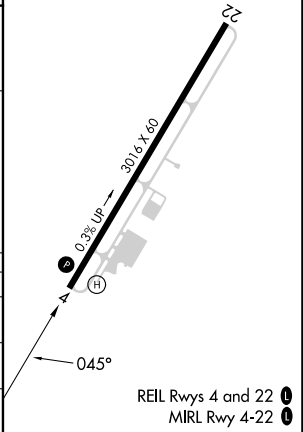
RNP APCH - GPS.	<p>Procedure NA at night. Rwy 4 helicopter visibility reduction below 1 SM NA. Use Griffiss Intl altimeter setting. Circling NA west of Rwy 4-22. Circling NA for Cat C.</p>	<p>MISSED APPROACH: Climb to 3500 then climbing right turn to 7000 direct GASSY and hold.</p>
-----------------	--	---

RME ASOS <b>118.7</b>	BOSTON CENTER <b>135.25 377.1</b>	UNICOM <b>122.8 (CTAF)</b>
--------------------------	--------------------------------------	-------------------------------



ELEV 1703	TDZE 1703
-----------	-----------

CATEGORY	A	B	C	D
LP MDA	2680-1¼ 977 (1000-1¼)	2680-1½ 977 (1000-1½)	2680-3 977 (1000-3)	NA
RNAV MDA	3400-1¼ 1697 (1700-1¼)	3400-1½ 1697 (1700-1½)	3400-3 1697 (1700-3)	NA
CIRCLING	3400-1¼ 1697 (1700-1¼)	3400-1½ 1697 (1700-1½)	3520-3 1817 (1900-3)	NA



NE-2, 26 DEC 2024 to 23 JAN 2025

NE-2, 26 DEC 2024 to 23 JAN 2025