

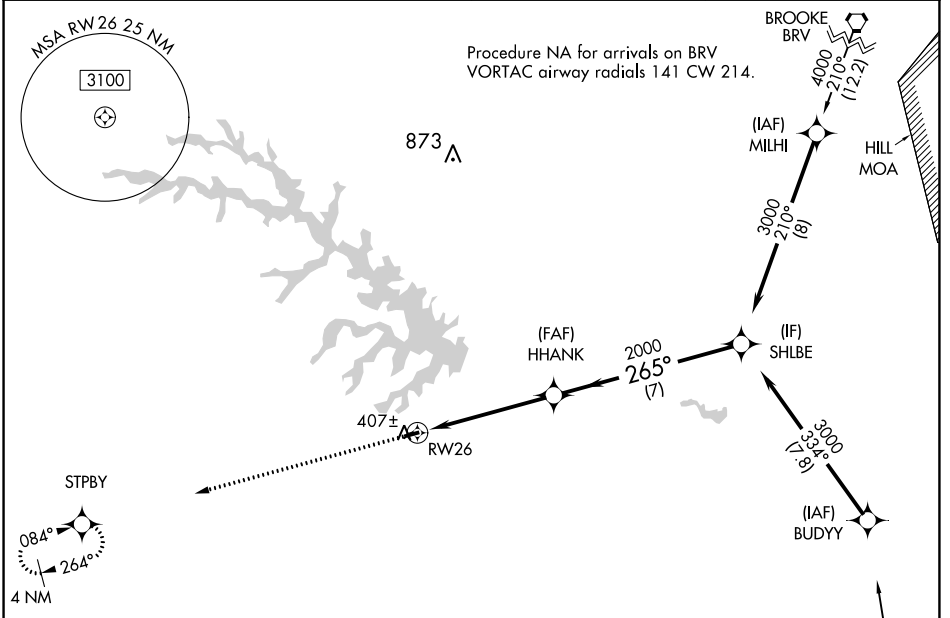
APP CRS	Rwy Idg	2558
265°	TDZE	351
	Apt Elev	351

RNAV (GPS) RWY 26

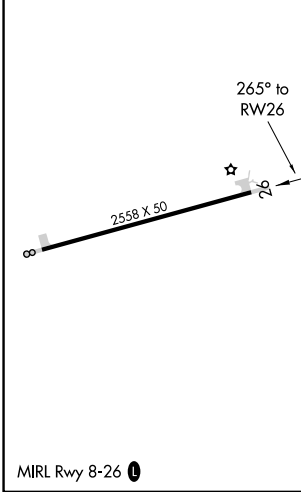
LAKE ANNA (7W4)

RNP APCH.	Procedure NA at night. When local altimeter setting not received, use Louisa altimeter setting and increase all MDA 60 feet. Helicopter visibility reduction below 3 SM NA.	MISSED APPROACH: Climb to 3000 direct STPBY and hold.

AWOS-3 120.775	LKU AWOS-3 119.475	POTOMAC APP CON 126.75 307.2	CTAF 122.9
--------------------------	------------------------------	----------------------------------------	----------------------



ELEV 351	TDZE 351
----------	----------



Procedure NA for arrivals on RIC VORTAC airway radials 283 CW 048.

3000	STPBY	Visual Segment - Obstacles.	SHLBE	
↑	✧		3000	
		HHANK		
		2000		
		5.1 NM	7 NM	
CATEGORY	A	B	C	D
LNAV MDA	1360-3	1009 (1100-3)	NA	
CIRCLING	1360-3	1009 (1100-3)	NA	

NE-3, 26 DEC 2024 to 23 JAN 2025

NE-3, 26 DEC 2024 to 23 JAN 2025