

APP CRS	Rwy Idg	N/A
264°	TDZE	N/A
	Apt Elev	720

RNAV (GPS)-A

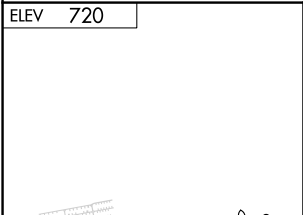
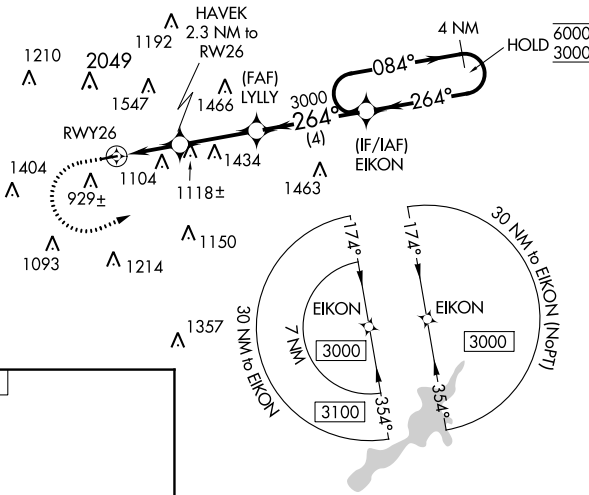
MORAINE AIR PARK (I73)

RNP APCH - GPS.		MISSED APPROACH: Climb to 1500 then climbing left turn to 3000 direct EIKON and hold.
▼	Procedure NA at night.	
▲	NA	Rwy 8 and 26 helicopter visibility reduction below 1 SM NA. Use Dayton-Wright Brothers altimeter setting.

MGY ASOS 118.375	COLUMBUS APP CON 118.85 269.275	UNICOM 122.7 (CTAF)
----------------------------	---	-------------------------------

EC-2, 26 DEC 2024 to 23 JAN 2025

EC-2, 26 DEC 2024 to 23 JAN 2025



	1500	3000	EIKON	4 NM Holding Pattern	
	↑	↻	✦	LYLLY	EIKON
	HAVEK 2.3 NM to RW26		264°	084°	6000
	RW26		3000	264°	3000
	1780 TCH 40				
	2.3 NM	2.8 NM	4 NM		
CATEGORY	A	B	C	D	
☑ CIRCLING	1440-1 720 (800-1)	1520-1 800 (800-1)	NA		