

WAAS CH <b>65832</b> <b>W18A</b>	APP CRS <b>182°</b>	Rwy Idg <b>5003</b> TDZE <b>239</b> Apt Elev <b>239</b>
--	------------------------	---

# RNAV (GPS) RWY 18

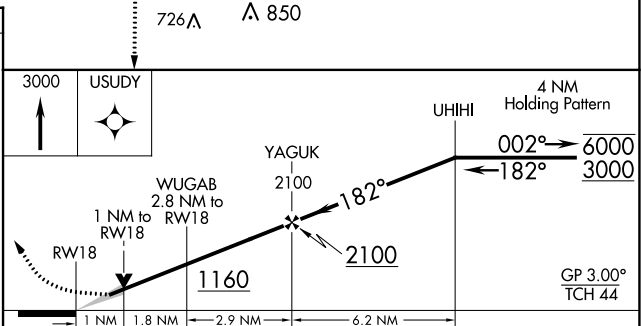
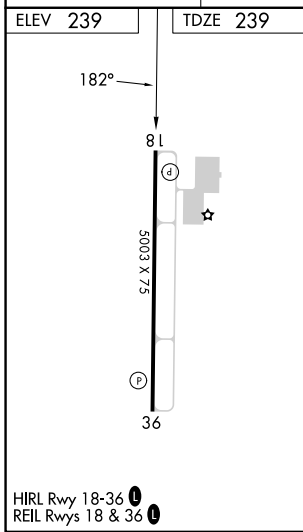
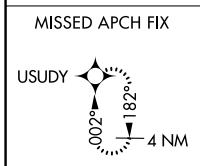
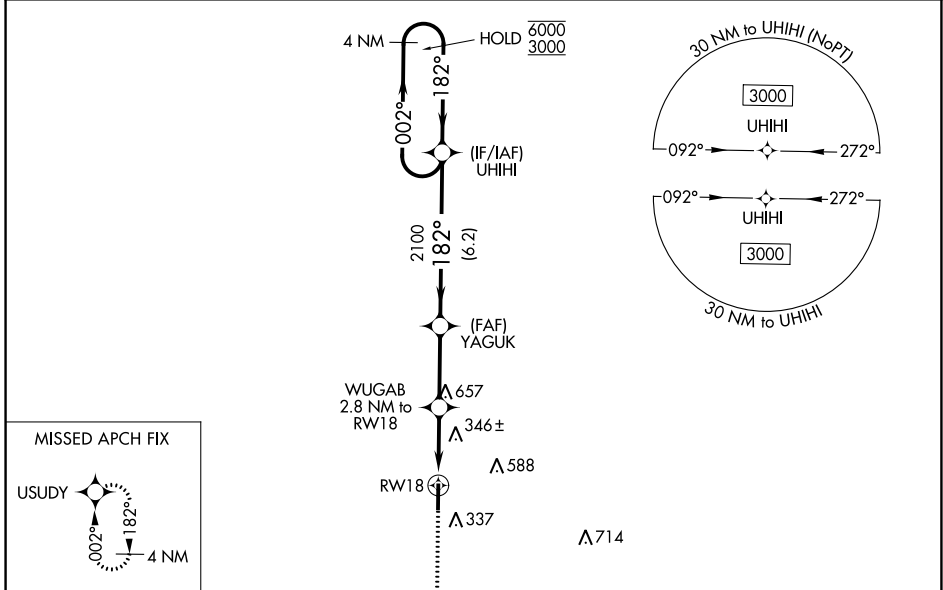
DELTA RGNL (DRP)

RNP APCH - GPS.

**⚠** Baro-VNAV and VDP NA when using West Memphis altimeter setting. For uncompensated Baro-VNAV systems, LNAV/VNAV NA below -15°C or above 54°C. When local altimeter setting not received, use West Memphis altimeter setting; increase LPV DA to 507 feet and all visibilities  $\frac{1}{8}$  SM; increase LNAV/VNAV DA to 668 feet and all visibilities  $\frac{1}{4}$  SM; increase all MDAs 80 feet.

MISSED APPROACH: Climb to 3000 direct USUDY and hold, continue climb-in-hold to 3000.

AWOS-3P <b>120.0</b>	MEMPHIS CENTER <b>135.3 335.8</b>	UNICOM <b>123.0 (CTAF)</b>
-------------------------	--------------------------------------	-------------------------------



CATEGORY	A	B	C	D
LPV DA	439- $\frac{3}{4}$	200 (200- $\frac{3}{4}$ )		NA
LNAV/VNAV DA	600-1	361 (400-1)		NA
LNAV MDA	600-1	361 (400-1)		NA
<b>C</b> CIRCLING	760-1	521 (600-1)		NA

SC-1, 26 DEC 2024 to 23 JAN 2025

SC-1, 26 DEC 2024 to 23 JAN 2025