

WAAS CH 42744 W34A	APP CRS 343°	Rwy Idg TDZE 5365 Apt Elev 5374
--	------------------------	---

RNAV (GPS) RWY 34

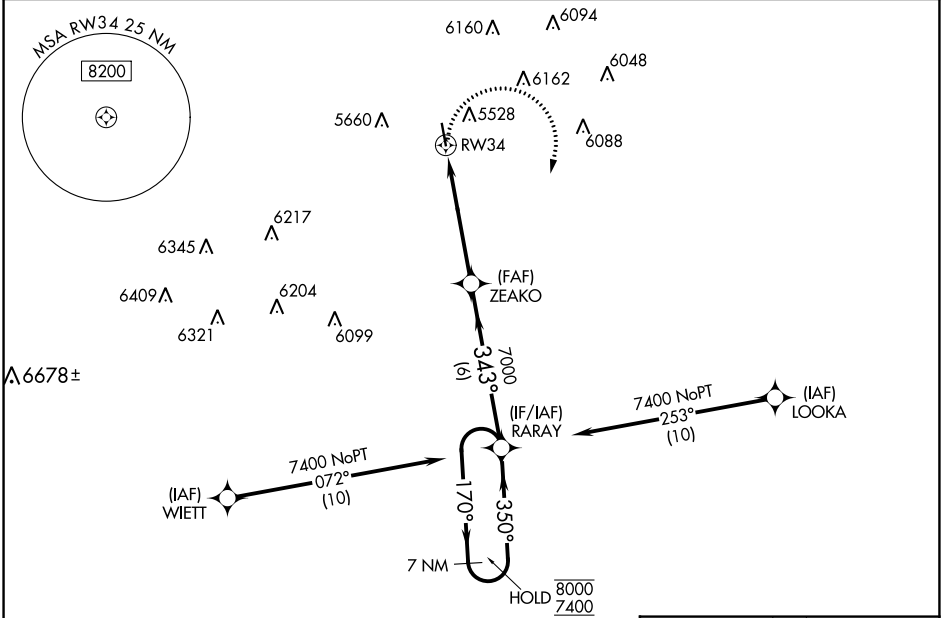
LIMON MUNI (LIC)

RNP APCH - GPS.

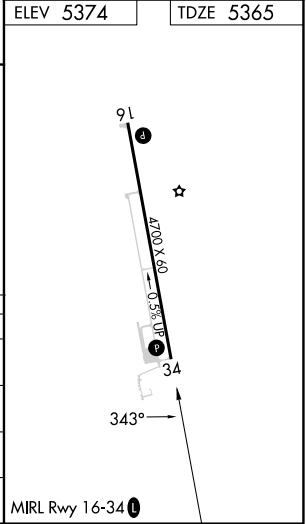
⚠ Rwy 34 helicopter visibility reduction below 3/4 SM NA. For uncompensated Baro-VNAV systems, LNAV/VNAV NA below -25°C or above 54°C.

MISSED APPROACH: Climbing right turn to 7400 direct RARAY and hold.

ASOS 121.125	DENVER CENTER 133.4 377.175	CTAF 122.9 0
------------------------	---------------------------------------	------------------------



7400	RARAY	7 NM Holding Pattern		
		ZEAKO 7000 1.9 NM to RWY 34 RWY 34 1.9 NM 3.2 NM 6 NM RARAY 170° → 8000 ← 350° 7400 343° 7000 GP 3.00° TCH 39		
CATEGORY	A	B	C	D
LPV DA	5615-3/4 250 (300-3/4)			NA
LNAV/VNAV DA	5824-1 3/8 459 (500-1 3/8)			NA
LNAV MDA	6000-1	635 (700-1)	6000-1 3/4 635 (700-1 3/4)	NA
C CIRCLING	6000-1	626 (700-1)	6220-2 1/2 846 (900-2 1/2)	NA



SW-1, 26 DEC 2024 to 23 JAN 2025

SW-1, 26 DEC 2024 to 23 JAN 2025