

WAAS CH <b>42937</b> W13A	APP CRS <b>126°</b>	Rwy Idg <b>3314</b> TDZE <b>160</b> Apt Elev <b>162</b>
---------------------------------	------------------------	---

# RNAV (GPS) RWY 13

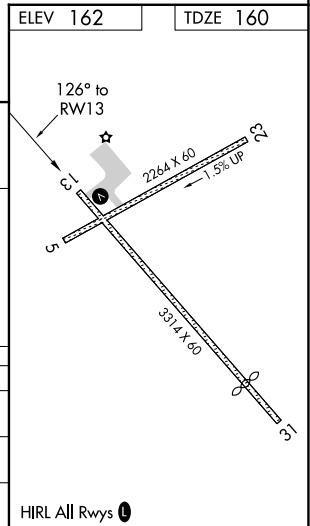
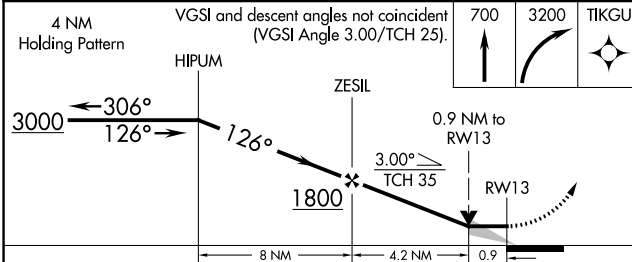
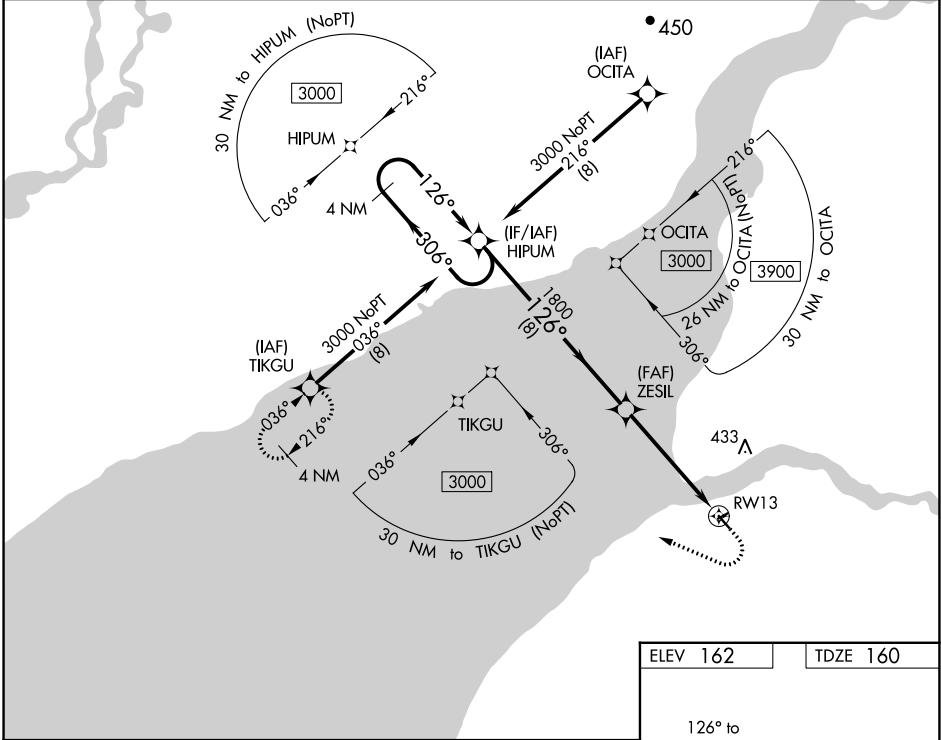
SOUTH NAKNEK NR 2 (WSN)(PFWS)

RNP APCH.

⚠ When local altimeter setting not received, use King Salmon altimeter setting and increase all MDA 40 feet. Circling Rwy 5 NA at night. VDP NA when using King Salmon altimeter setting.

MISSED APPROACH: Climb to 700 then climbing right turn to 3200 direct TIKGU and hold.

AWOS-3P <b>121.575</b>	ANCHORAGE CENTER <b>124.8 354.0</b>	CTAF <b>122.9</b> <b>0</b>
---------------------------	--	-------------------------------



CATEGORY	A	B	C	D
LP MDA	480-1	320 (400-1)		NA
LNAV MDA	500-1	340 (400-1)		NA
<b>C</b> CIRCLING	560-1 398 (400-1)	620-1 458 (500-1)		NA

AK, 26 DEC 2024 to 20 FEB 2025

AK, 26 DEC 2024 to 20 FEB 2025