

APP CRS	Rwy Idg	<b>4001</b>
<b>187°</b>	TDZE	<b>626</b>
	Apt Elev	<b>626</b>

# RNAV (GPS) RWY 19

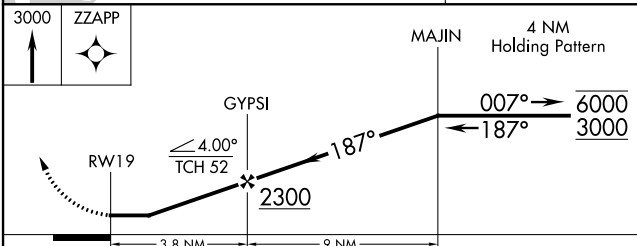
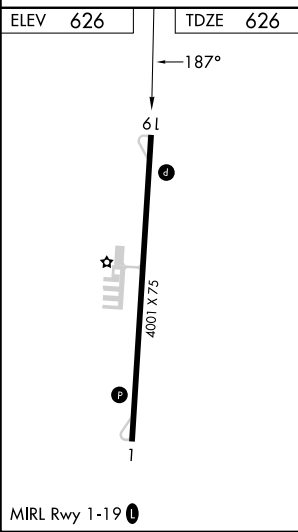
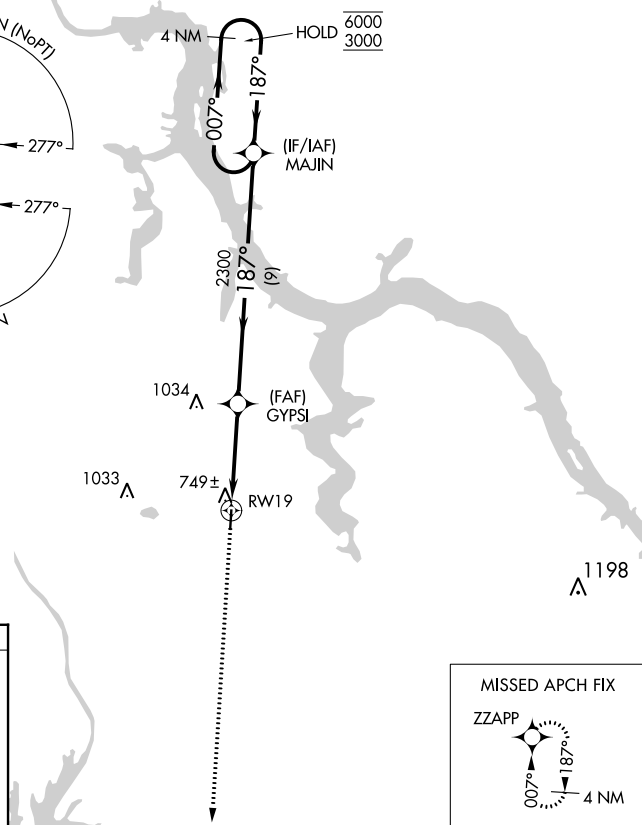
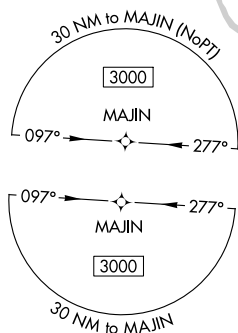
SEGARS FLD (15M)

RNP APCH-GPS.

**▲ NA** Procedure NA at night. Rwy 19 helicopter visibility reduction below 1 SM NA. Use Muscle Shoals altimeter setting.

MISSED APPROACH: Climb to 3000 direct ZZAPP and hold.

AWOS-3PT <b>119.250</b>	MSL ASOS <b>119.425</b>	MEMPHIS CENTER <b>124.35 318.1</b>	CTAF <b>122.9</b>
----------------------------	----------------------------	---------------------------------------	----------------------



CATEGORY	A	B	C	D
LNAV MDA	1080-1	454 (500-1)	NA	

SC-4, 26 DEC 2024 to 23 JAN 2025

SC-4, 26 DEC 2024 to 23 JAN 2025