

| | | |
|---------|----------|-----|
| APP CRS | Rwy Idg | N/A |
| 165° | TDZE | N/A |
| | Apt Elev | 320 |

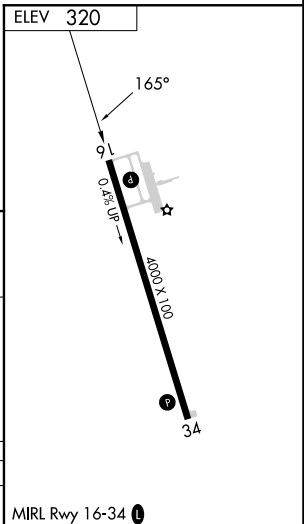
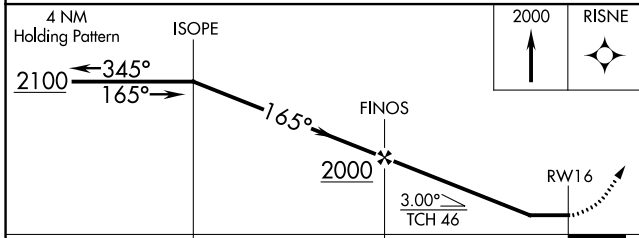
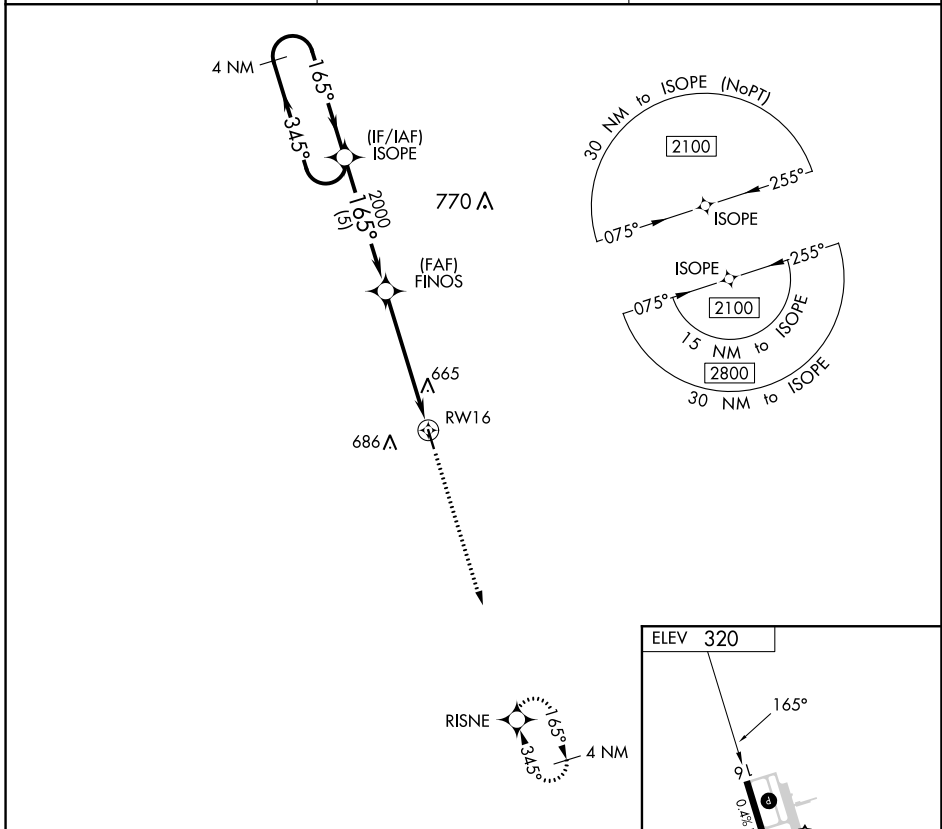
RNAV (GPS)-A

POPLARVILLE/PEARL RIVER COUNTY (M13)

▽ DME/DME RNP-0.3 NA. Use Bogalusa altimeter setting; when not received, use Hattiesburg altimeter setting and increase MDA 40 feet and increase Circling Cat B/C/D visibility ¼ mile. Helicopter visibility reduction below 1 SM NA. Procedure NA at night.

△ NA MISSED APPROACH: Climb to 2000 direct RISNE and hold.

| | | |
|--------------------------------|--|-------------------------------|
| BXA AWOS-3PT 118.025 | GULFPORT APP CON ★ 124.6 354.1 | CTAF 122.9 ① |
|--------------------------------|--|-------------------------------|



| CATEGORY | A | B | C | D |
|-------------------|-----------------------|-----------------------|-------------------------|-------------------------|
| ① CIRCLING | 1040-1 720 (800-1) | 1120-1 800 (800-1) | 1120-2¼ 800 (800-2¼) | 1120-2½ 800 (800-2½) |

SC-4, 26 DEC 2024 to 23 JAN 2025

SC-4, 26 DEC 2024 to 23 JAN 2025