

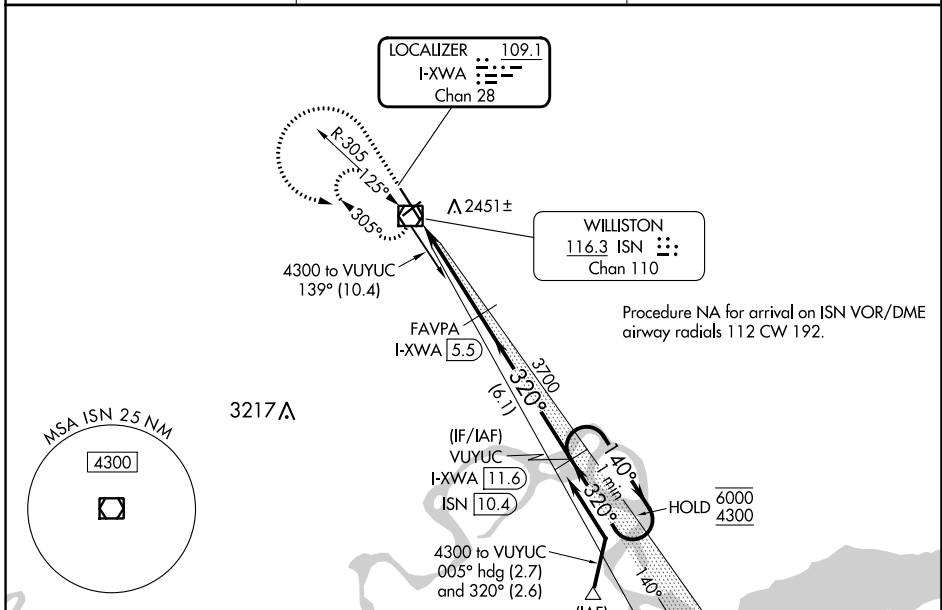
LOC/DME I-XWA 109.1 Chan 28	APP CRS 320°	Rwy ldg 7503 TDZE 2350 Apt Elev 2353
--	------------------------	---

ILS or LOC RWY 32

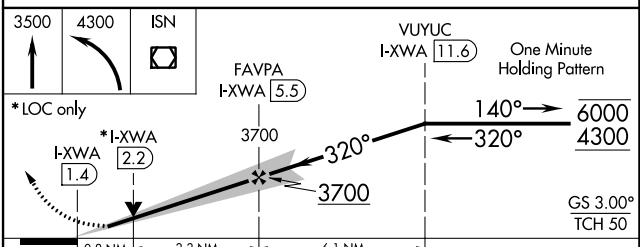
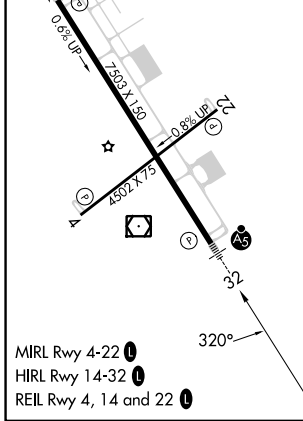
WILLISTON BASIN INTL (XWA)

DME required.	MALSR	MISSED APPROACH: Climb to 3500 then climbing left turn to 4300 direct ISN VOR/DME and hold, continue climb-in-hold to 4300.
<p>▼</p> <p>▲ NA For inop ALS, increase S-LOC 32 Cat C/D visibility to ½ SM.</p>		

ASOS 125.925	SALT LAKE CITY CENTER 126.85 305.2	UNICOM 122.8 (CTAF) ①
------------------------	--	---------------------------------



ELEV 2353	D	TDZE 2350
-----------	---	-----------



CATEGORY	A	B	C	D
S-ILS 32	2550-½		200 (200-½)	
S-LOC 32	2660-½		310 (400-½)	
☑ CIRCLING	2760-1 407 (500-1)	2820-1 467 (500-1)	2820-1½ 467 (500-1½)	2920-2 567 (600-2)

NC-1, 26 DEC 2024 to 23 JAN 2025

NC-1, 26 DEC 2024 to 23 JAN 2025