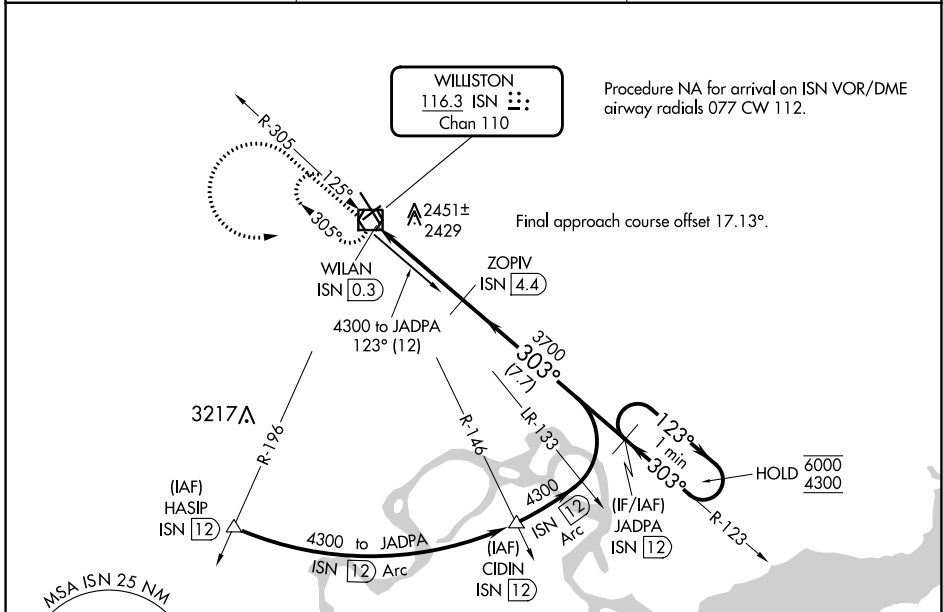


VOR/DME ISN 116.3 Chan 110	APP CRS 303°	Rwy Idg TDZE Apt Elev	7503 2350 2353
--	------------------------	-----------------------------	---

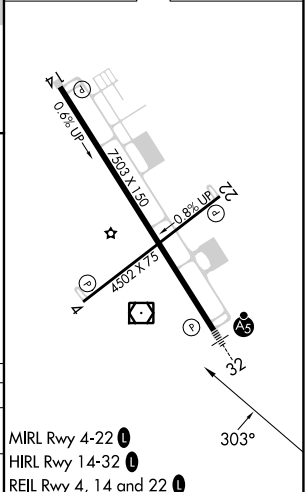
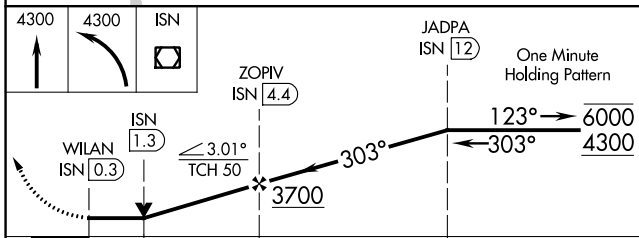
VOR RWY 32
WILLISTON BASIN INTL (XWA)

DME required.		MALSR	MISSED APPROACH: Climb to 4300 then climbing left turn to 4300 direct ISN VOR/DME and hold
For inop ALS, increase S-32 Cats C/D visibility to 1 1/8 SM.			

ASOS 125.925	SALT LAKE CITY CENTER 126.85 305.2	UNICOM 122.8 (CTAF)
------------------------	--	-------------------------------



ELEV 2353	TDZE 2350
-----------	-----------



CATEGORY	A	B	C	D
S-32	2740-1/2 390 (400-1/2)		2740-3/4 390 (400-3/4)	
CIRCLING	2760-1 407 (500-1)	2820-1 467 (500-1)	2820-1 1/2 467 (500-1 1/2)	2920-2 567 (600-2)

MIRL Rwy 4-22

HIRL Rwy 14-32

REIL Rwy 4, 14 and 22

NC-1, 26 DEC 2024 to 23 JAN 2025

NC-1, 26 DEC 2024 to 23 JAN 2025