

# TACAN Z RWY 22

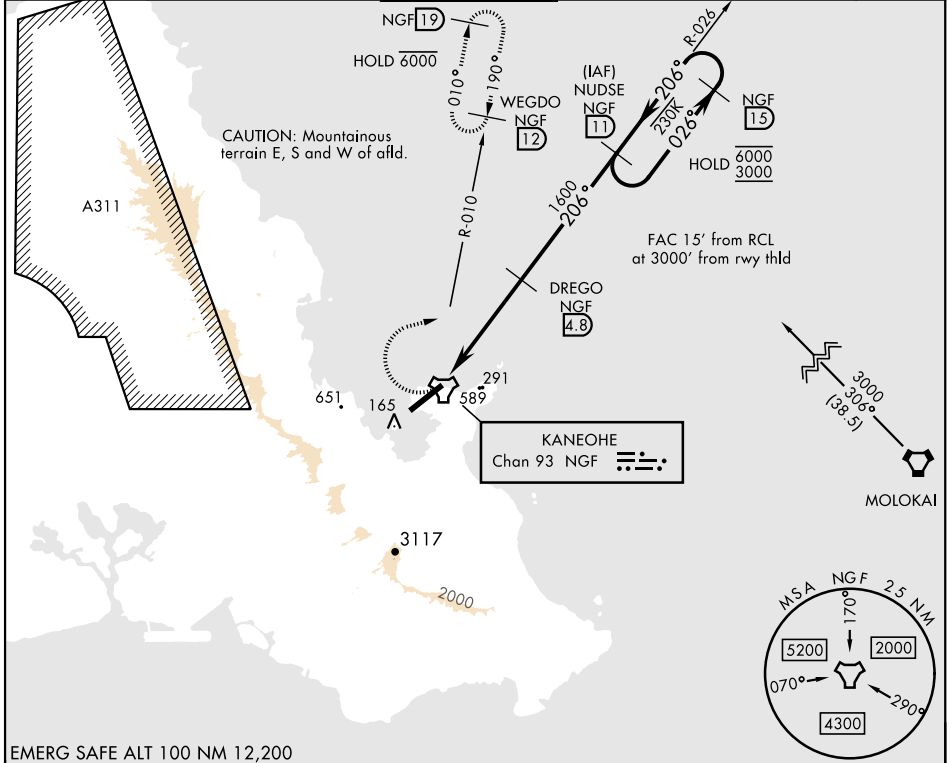
TACAN NGF Chan <b>93</b>	APCH CRS <b>206°</b>	Rwy ldg TDZE <b>23</b> Arprt Elev <b>23</b>
--------------------------	----------------------	--

[USN]

KANEOHE BAY MCAS (PHNG)

**▼** \* Circling not authorized SE of Rwy 4-22, CAT D remain within 2.8 NM. MISSED APPROACH: Climbing right turn to 4100, intercept NGF TACAN R-010 and proceed direct WEGDO. Continue climb-in-hold to 4100.

ATIS <b>284.5</b>	APP/DEP CON <b>125.0 263.5</b>	TOWER <b>120.7(CTAF) 360.2</b>	GND CON <b>382.8</b>	CLNC DEL <b>294.7</b>	ASR / PAR
-------------------	--------------------------------	--------------------------------	----------------------	-----------------------	-----------



4100 NGF R-010	WEGDO NGF 12	TA 18,000	ELEV 23	TDZE 23
CATEGORY	A	B	C	D
S-22	780-1 757 (800-1)	780-1¼ 757 (800-1¼)	780-2 757 (800-2)	
<b>CIRCLING*</b>	780-1 757 (800-1)	780-1¼ 757 (800-1¼)	960-2¾ 937 (1000-2¾)	960-3 937 (1000-3)

# TACAN Z RWY 22

PAC, 26 DEC 2024 to 20 FEB 2025

PAC, 26 DEC 2024 to 20 FEB 2025