

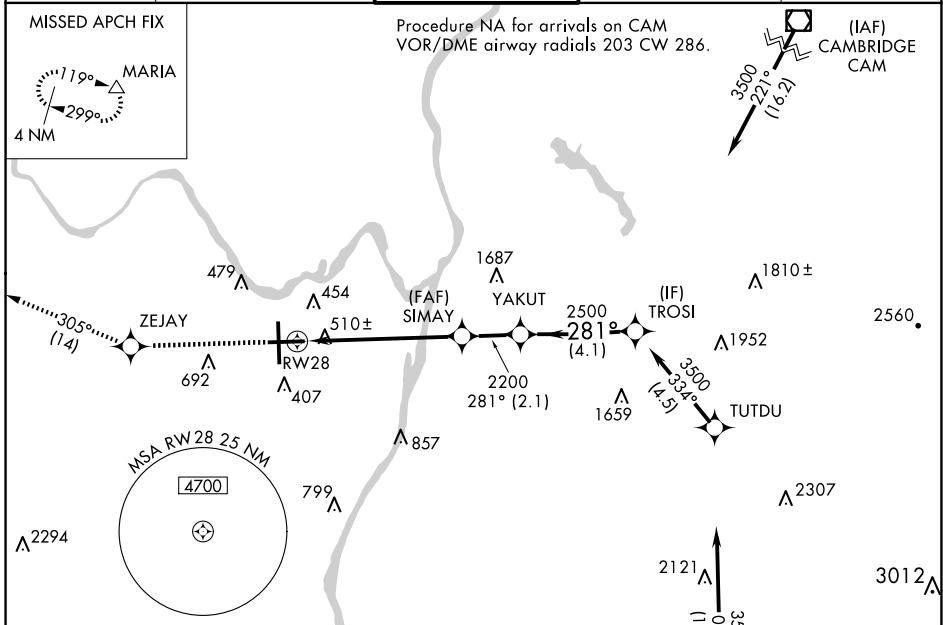
WAAS CH 78124 W28A	APP CRS 281°	Rwy Idg TDZE Apt Elev	6007 285 285
--	------------------------	-----------------------------	---

RNAV (GPS) RWY 28

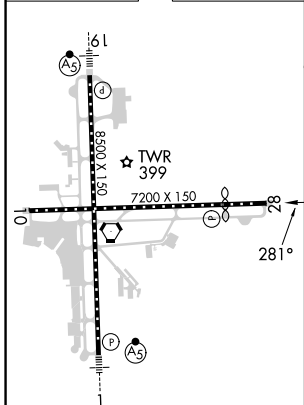
ALBANY INTL (ALB)

RNP APCH - GPS.	MISSED APPROACH: Climb to 3500 direct ZEJAY and on track 305° to MARIA and hold.
<p>▼ For uncompensated Baro-VNAV systems, LNAV/VNAV NA below -18°C or above 42°C. Circling NA west of Rwy 1-19. Circling Rwy 10 NA at night. When VGSI inop, procedure NA at night. Rwy 28 helicopter visibility reduction below 1 SM NA.</p>	

D-ATIS 120.45	ALBANY APP CON 132.825 307.2	ALBANY TOWER 119.5 257.8	GND CON 121.7 348.6	CLNC DEL 127.50
-------------------------	--	------------------------------------	-------------------------------	---------------------------

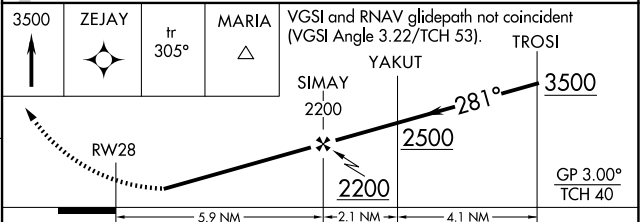


ELEV 285	D	TDZE 285
----------	----------	----------



TDZ/CL Rwy 1
HIRL Rwy 1-19
MIRL Rwy 10-28
REIL Rws 10 and 28

Procedure NA for arrivals at CANAN on V487 southwest bound and V130 southeast bound.



CATEGORY	A	B	C	D
LPV DA		783-1 ³ / ₄	498 (500-1 ³ / ₄)	
LNAV/VNAV DA		825-1 ⁷ / ₈	540 (600-1 ⁷ / ₈)	
LNAV MDA	780-1	495 (500-1)	780-1 ³ / ₈	495 (500-1 ³ / ₈)
C CIRCLING	820-1	535 (600-1)	860-1 ¹ / ₂ 575 (600-1 ¹ / ₂)	960-2 ¹ / ₄ 675 (700-2 ¹ / ₄)

NE-2, 23 JAN 2025 to 20 FEB 2025

NE-2, 23 JAN 2025 to 20 FEB 2025