

# ADYOS THREE DEPARTURE (RNAV)

AL-12 (FAA)

ALBUQUERQUE INTL SUNPORT (ABQ)  
ALBUQUERQUE, NEW MEXICO

SW-1, 23 JAN 2025 to 20 FEB 2025

**DEPARTURE ROUTE DESCRIPTION**

**TAKEOFF RUNWAY 21:** Climb heading 214° to 5860, then direct ASTAH, cross ASTAH at or below 9000, then on depicted route to ADYOS. Thence. . . .

**TAKEOFF RUNWAY 26:** Climb heading 259° to 5860, then direct ABQ VORTAC, then on track 262° to ADYOS. Thence. . . .

. . . (transition). Maintain FL200, expect filed altitude ten minutes after departure.

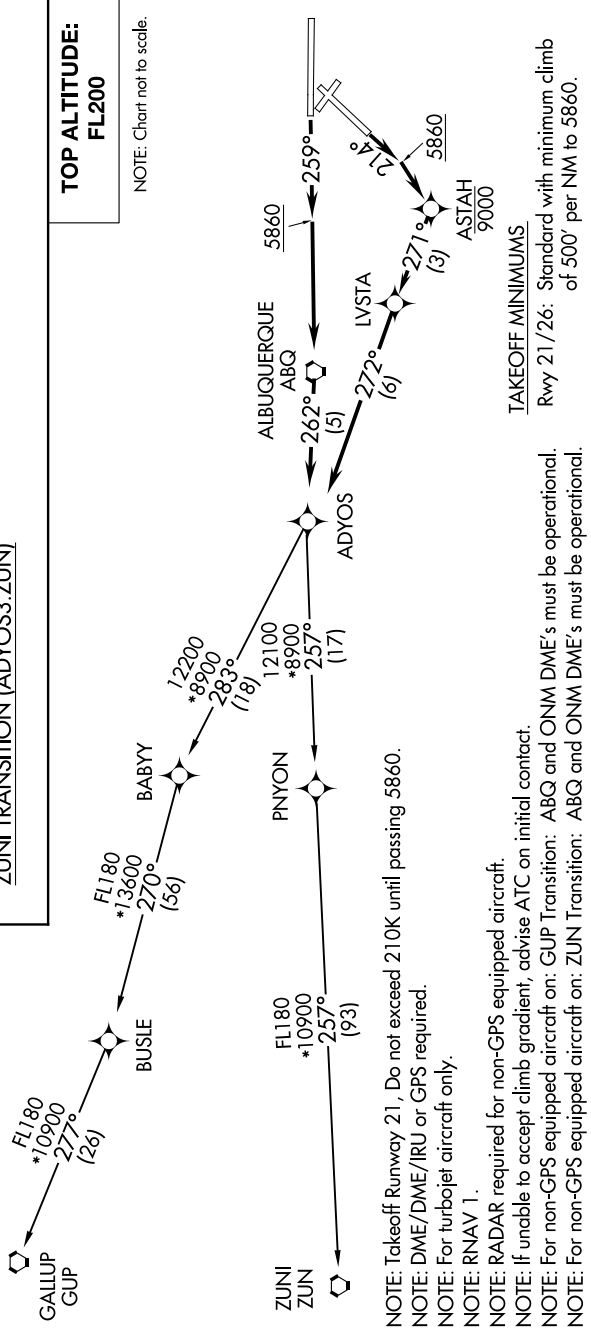
GALLUP TRANSITION (ADYOS3.GUP)

ZUNI TRANSITION (ADYOS3.ZUN)

**TOP ALTITUDE: FL200**

NOTE: Chart not to scale.

D-ATIS 118.0 257.7  
CLNC DEL 119.2 259.3  
CPDC 121.9 348.6  
GND CON 120.3 351.9  
ALBUQUERQUE TOWER 127.4 253.5  
ALBUQUERQUE DEP CON



NOTE: Takeoff Runway 21, Do not exceed 210K until passing 5860.  
NOTE: DME/DME/IRU or GPS required.  
NOTE: For turbojet aircraft only.  
NOTE: RNAV 1.  
NOTE: RADAR required for non-GPS equipped aircraft.  
NOTE: If unable to accept climb gradient, advise ATC on initial contact.  
NOTE: For non-GPS equipped aircraft on: GUP Transition: ABQ and ONM DME's must be operational.  
NOTE: For non-GPS equipped aircraft on: ZUN Transition: ABQ and ONM DME's must be operational.

**TAKEOFF MINIMUMS**  
Rwy 21/26: Standard with minimum climb of 500' per NM to 5860.

# ADYOS THREE DEPARTURE (RNAV)

(ADYOS3.ADYOS) 25JUN15

ALBUQUERQUE, NEW MEXICO  
ALBUQUERQUE INTL SUNPORT (ABQ)

SW-1, 23 JAN 2025 to 20 FEB 2025