

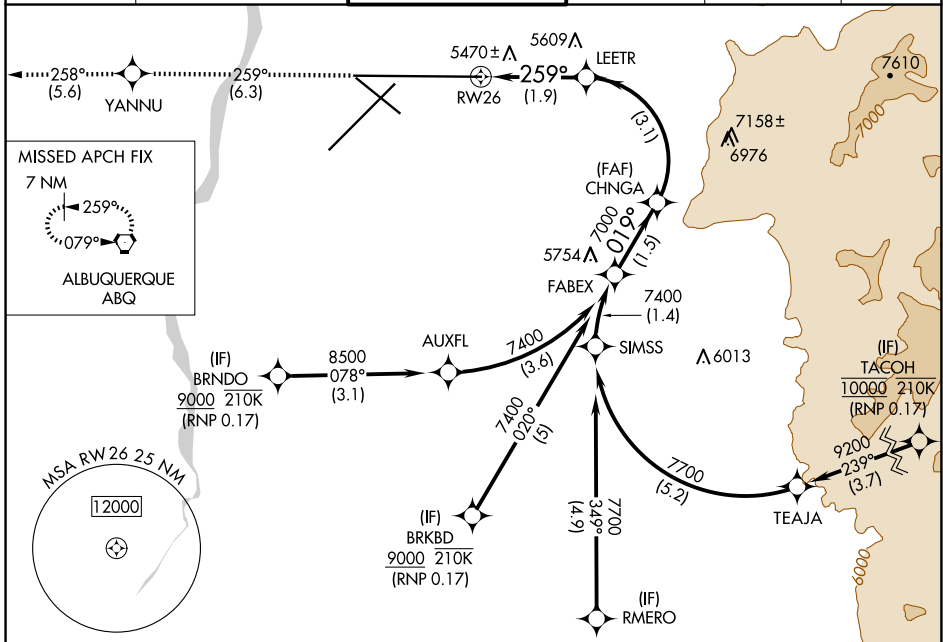
APP CRS <b>259°</b>	Rwy Idg TDZE Apt Elev	<b>13793</b> <b>5355</b> <b>5355</b>
------------------------	-----------------------------	--

# RNAV (RNP) Z RWY 26

ALBUQUERQUE INTL SUNPORT (ABQ)

RNP AR APCH, RF required.	MISSED APPROACH: Climb to 8000 on track 259° to YANNU and on track 258° to ABQ VORTAC and hold.
▼ For uncompensated Baro-VNAV systems, procedure NA ASR below -13°C or above 48°C.	

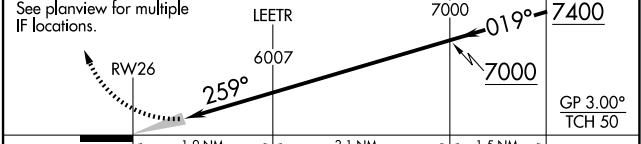
D-ATIS <b>118.0 257.7</b>	ALBUQUERQUE APP CON <b>123.9 354.1</b>	ALBUQUERQUE TOWER <b>120.3 351.9</b>	GND CON <b>121.9 348.6</b>	CLNC DEL <b>119.2 259.3</b>	CPDLC
------------------------------	---	---	-------------------------------	--------------------------------	-------



ELEV 5355	<b>D</b>	TDZE 5355
-----------	----------	-----------



8000	YANNU	tr 259°	ABQ	VGSI and RNAV glidepath not coincident (VGSI Angle 3.00/TCH 83).
		tr 258°		FABEX



CATEGORY	A	B	C	D
RNP 0.17 DA	5745-1¼ 390 (400-1¼)			

**AUTHORIZATION REQUIRED**

SW-1, 23 JAN 2025 to 20 FEB 2025

SW-1, 23 JAN 2025 to 20 FEB 2025