

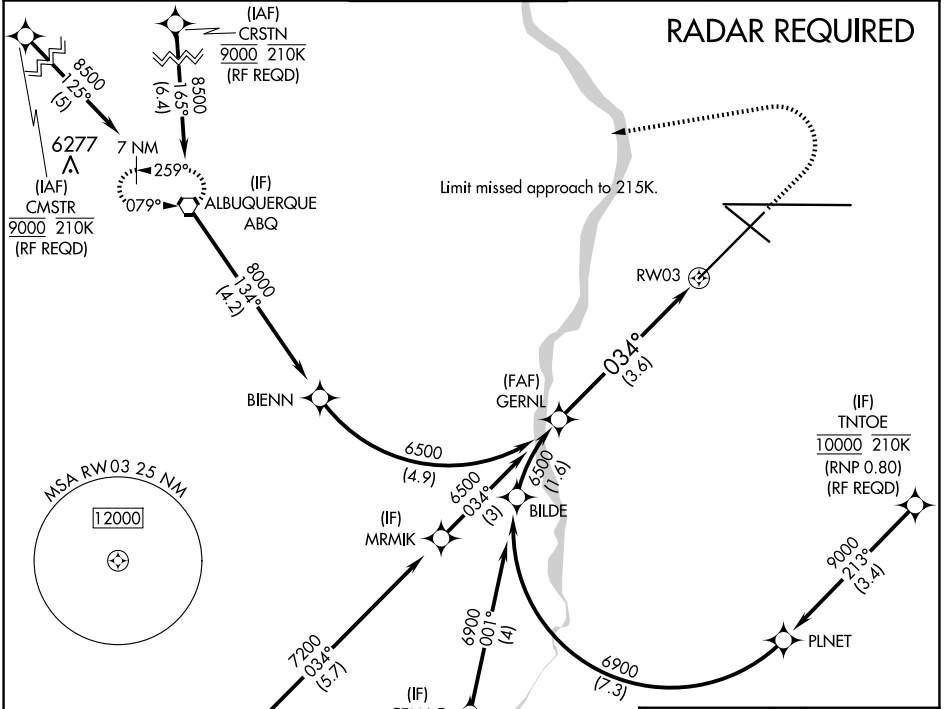
APP CRS 034°	Rwy Idg 10000
	TDZE 5312
	Apt Elev 5355

RNAV (RNP) Z RWY 3

ALBUQUERQUE INTL SUNPORT (ABQ)

<p>ASR</p> <p>For uncompensated Baro-VNAV systems, procedure NA below -12°C (11°F) or above 45°C (114°F). For inop MALSRS, increase RNP 0.30 all Cats visibility to RVR 4000. GPS required.</p>	<p>MALSRS</p> <p>MISSED APPROACH: Climb to 6200 then climbing left turn to 8000 direct ABQ VORTAC and hold.</p>
--	---

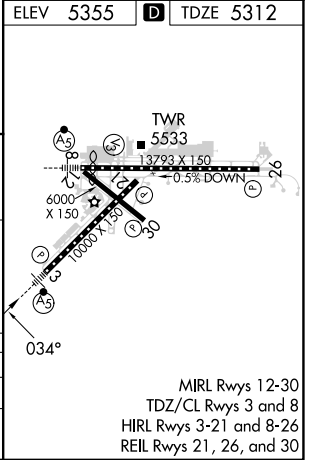
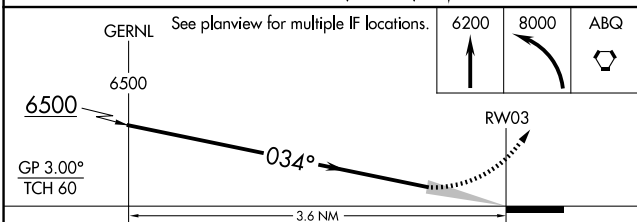
D-ATIS 118.0 257.7	ALBUQUERQUE APP CON 123.9 354.1	ALBUQUERQUE TOWER 120.3 351.9	GND CON 121.9 348.6	CLNC DEL 119.2 259.3	CPDLC
------------------------------	---	---	-------------------------------	--------------------------------	-------



SW-1, 23 JAN 2025 to 20 FEB 2025

SW-1, 23 JAN 2025 to 20 FEB 2025

ELEV 5355	D	TDZE 5312
-----------	----------	-----------



CATEGORY	A	B	C	D
RNP 0.30 DA	5571/24		259 (300-½)	

AUTHORIZATION REQUIRED