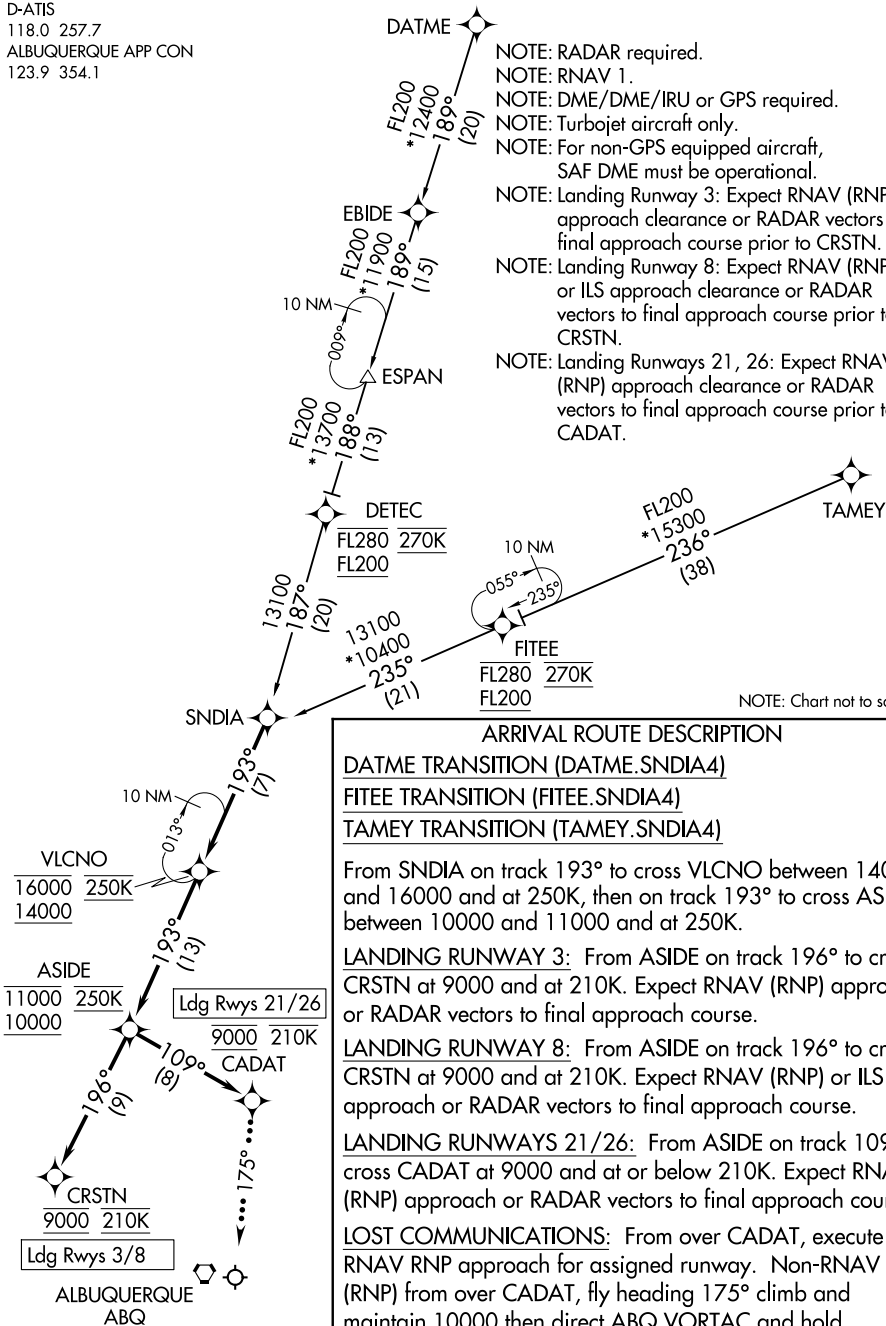


D-ATIS
118.0 257.7
ALBUQUERQUE APP CON
123.9 354.1

NOTE: RADAR required.
 NOTE: RNAV 1.
 NOTE: DME/DME/IRU or GPS required.
 NOTE: Turbojet aircraft only.
 NOTE: For non-GPS equipped aircraft, SAF DME must be operational.
 NOTE: Landing Runway 3: Expect RNAV (RNP) approach clearance or RADAR vectors to final approach course prior to CRSTN.
 NOTE: Landing Runway 8: Expect RNAV (RNP) or ILS approach clearance or RADAR vectors to final approach course prior to CRSTN.
 NOTE: Landing Runways 21, 26: Expect RNAV (RNP) approach clearance or RADAR vectors to final approach course prior to CADAT.



SW-1, 23 JAN 2025 to 20 FEB 2025

SW-1, 23 JAN 2025 to 20 FEB 2025