

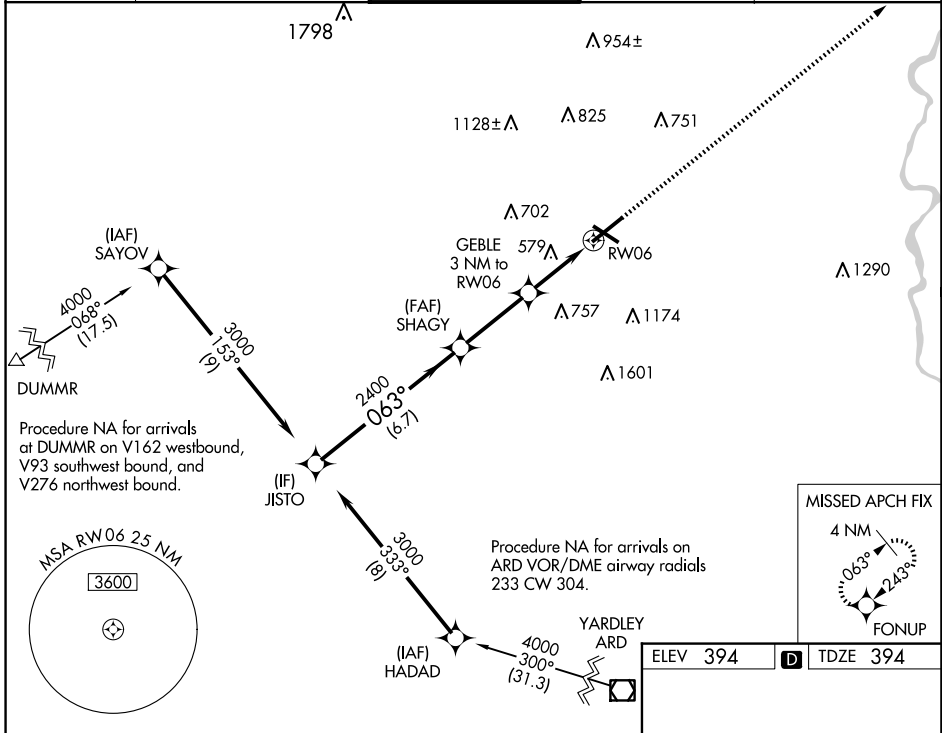
WAAS CH 69432 W06A	APP CRS 063°	Rwy Idg TDZE 394 Apt Elev 394	7599
--	------------------------	---	-------------

RNAV (GPS) RWY 6

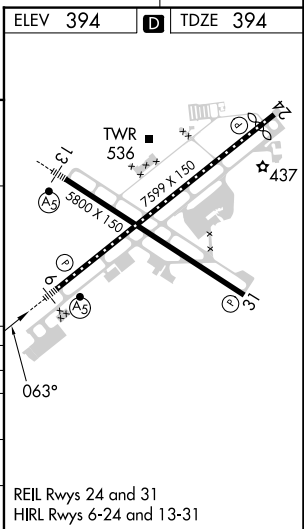
LEHIGH VALLEY INTL (ABE)

RNP APCH - GPS	<p>▼ For uncompensated Baro-VNAV systems, LNAV/VNAV NA below -8°C or above 54°C. For inop ALS, increase LNAV Cat C/D visibility to 1½ SM. ▲ **RVR 1800 authorized with use of FD or AP or HUD to DA.</p>	MALSR 	MISSED APPROACH: Climb to 3000 direct FONUP and hold.
----------------	---	-----------	---

ATIS 126.975	ALLENTOWN APP CON 119.65 124.45 351.8	ALLENTOWN TOWER 120.5 257.95	GND CON 121.9 257.95	CLNC DEL 124.05 257.95
------------------------	---	--	--------------------------------	----------------------------------



VGSi and RNAV glidepath not coincident (VGSi Angle 3.00/TCH 74).				
JSTO 3000 063° SHAGY 2400 GEBLE 3 NM to RW06 1.3 NM to RW06 RW06				
GP 3.00° TCH 56				
6.7 NM 3.1 NM 1.7 NM 1.3				
CATEGORY	A	B	C	D
LPV DA **	594/24		200 (200-½)	
LNAV/ DA VNAV	644/24		250 (300-½)	
LNAV MDA	840/24 446 (500-½)		840/45 446 (500-¾)	
CIRCLING	900-1 506 (600-1)		1180-2¼ 1600-3 786 (800-2¼) 1206 (1300-3)	



NE-4, 23 JAN 2025 to 20 FEB 2025

NE-4, 23 JAN 2025 to 20 FEB 2025