

HI-VOR or TACAN RWY 4

VORTAC PNH 116.6 Chan 113	APCH CRS 037°	Rwy Ldg TDZE 3607 Arprt Elev 3607	[USAF]	RICK HUSBAND AMARILLO INTL (KAMA)
-----------------------------------------------	-------------------------	-------------------------------------------------------------	--------	-----------------------------------

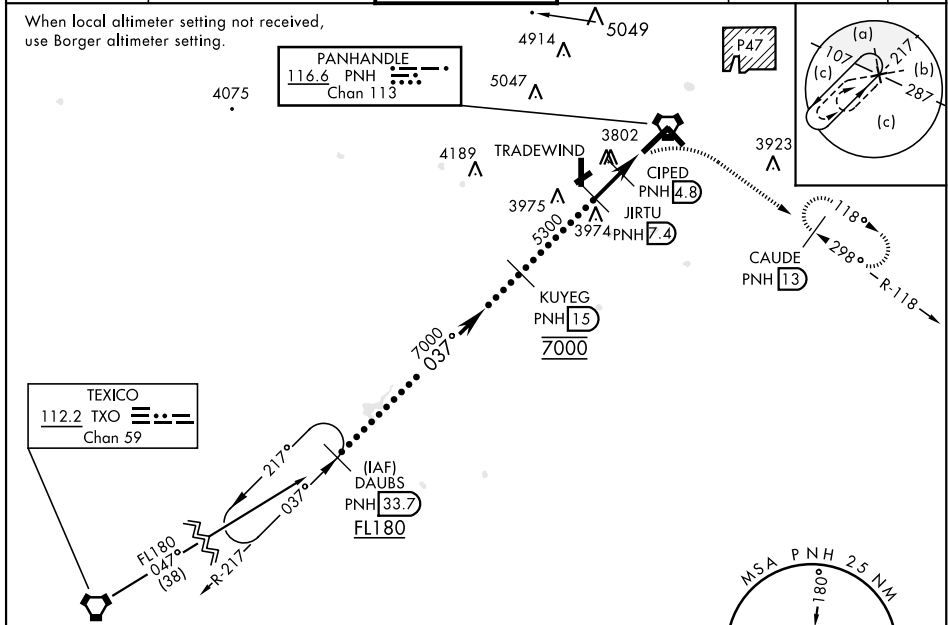
DME required

▼ * When ALS inop, increase CAT D vis to 1½ miles; CAT E vis to 1½ miles;
** When ALS inop, increase CAT CD vis to 1½ miles; CAT E vis to 1¾ miles.

MALSR **A5**

MISSED APPROACH: Climbing right turn to 5000 on heading 090° and PNH VORTAC R-118 to CAUDE/PNH 13 DME and hold.

ATIS 118.85 350.3	AMARILLO APP CON 119.5 307.0	AMARILLO TOWER * 118.3 (CTAF) 0 257.9	GND CON 121.9 348.6	CLNC DEL 121.65 239.275	ASR
-----------------------------	----------------------------------------	-------------------------------------------------	-------------------------------	-----------------------------------	-----



VDP N/A when using BORGER altimeter setting.

5000 hdg 090°

CAUDE PNH 13

DAUBS PNH 33.7

KUYEG PNH 15

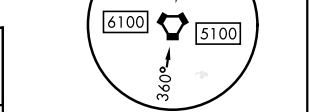
JIRTU PNH 7.4

CIPED PNH 4.8

UHQAX PNH 2.4

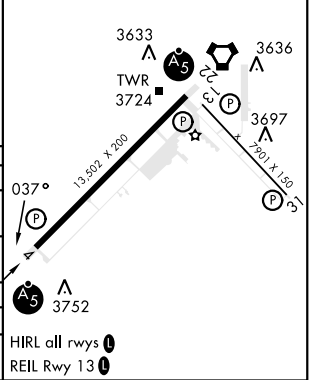
VORTAC

2.6 NM, 2.4 NM



ELEV	3607	TDZE	3607
------	------	------	------

CATEGORY	C	D	E
S-4 *	4040/40 433 (500-¾)	4040/50 433 (500-1)	
CIRCLING	4240-1¾ 633 (700-1¾)	4280-2¼ 673 (700-2¼)	4460-3 853 (900-3)
BORGER ALTIMETER SETTING			
S-4 **	4200-1¼	593	(600-1¼)
CIRCLING	4400-2¼ 793 (900-2¼)	4440-2¾ 833 (900-2¾)	4620-3 1013 (1100-3)



HI-VOR or TACAN RWY 4

SC-2, 23 JAN 2015 to 20 FEB 2025

SC-2, 23 JAN 2015 to 20 FEB 2025